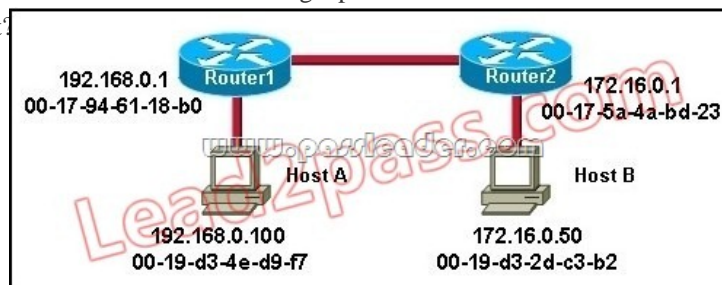


[2016-NEW! New PassLeader 238q 100-101 Exam Questions With Free VCE Download (Question 1 – Question 20)

Pass Cisco 100-101 exam easily by learning PassLeader 100-101 dumps! PassLeader now are offering the newest Cisco CCENT 100-101 exam dumps, the PassLeader 100-101 braindump contain all real 100-101 exam questions, 100% valid now! PassLeader now supply both 100-101 VCE dumps and 100-101 PDF dumps, which are really the best 100-101 study materials! ATTENTION PLEASE!!! The CCENT 100-101 exam will be retired on 20/Aug/2016, then, the 100-101 exam will be totally replaced by the new 100-105 exam! The newest 100-105 exam dumps collection: <http://www.vce4shared.com/?s=100-105> Free 100-105 PDF dumps from Google Drive: https://drive.google.com/open?id=0B-ob6L_QjGLpZHliX0IUeE1Ccms keywords: 100-101 exam,238q 100-101 exam dumps,238q 100-101 exam questions,100-101 pdf dumps,100-101 practice test,100-101 vce dumps,100-101 study guide,100-101 braindumps,Interconnecting Cisco Networking Devices Part 1 Exam P.S. Download Free 100-101 PDF Dumps From Google Drive: https://drive.google.com/open?id=0B-ob6L_QjGLpWXpiS19TTDNRdzg QUESTION 1How does a switch differ from a hub? A. A switch does not induce any latency into the frame transfer time.B. A switch tracks MAC addresses of directly-connected devices.C. A switch operates at a lower, more efficient layer of the OSI model.D. A switch decreases the number of broadcast domains.E. A switch decreases the number of collision domains. Answer: B QUESTION 2What must occur before a workstation can exchange HTTP packets with a web server? A. A UDP connection must be established between the workstation and its default gateway.B. A UDP connection must be established between the workstation and the web server.C. A TCP connection must be established between the workstation and its default gateway.D. A TCP connection must be established between the workstation and the web server.E. An ICMP connection must be established between the workstation and its default gateway.F. An ICMP connection must be established between the workstation and the web server. Answer: D QUESTION 3How does TCP differ from UDP? (Choose two.) A. TCP provides best effort delivery.B. TCP provides synchronized communication. C. TCP segments are essentially datagrams.D. TCP provides sequence numbering of packets.E. TCP uses broadcast delivery. Answer: BD QUESTION 4A workstation has just resolved a browser URL to the IP address of a server. What protocol will the workstation now use to determine the destination MAC address to be placed into frames directed toward the server? A. HTTPB. DNSC. DHCPD. RARPE. ARP Answer: E QUESTION 5Refer to the exhibit. Host A is sending a packet to Host B for the first time. What destination MAC address will Host A use in the ARP request?



A. 192.168.0.1B. 172.16.0.50C. 00-17-94-61-18-b0D. 00-19-d3-2d-c3-b2E. ff-ff-ff-ff-ff-ff. 255.255.255.255 Answer: E QUESTION 6The network manager has requested a 300-workstation expansion of the network. The workstations are to be installed in a single broadcast domain, but each workstation must have its own collision domain. The expansion is to be as cost-effective as possible while still meeting the requirements. Which three items will adequately fulfill the request? (Choose three). A. one IP subnet with a mask of 255.255.254.0B. two IP subnets with a mask of 255.255.255.0C. seven 48-port hubsD. seven 48-port switchesE. one router interfaceF. seven router interfaces Answer: ADE QUESTION 7What are two common TCP applications? (Choose two.) A. TFTPB. SMTPC. SNMPE. FTPE. DNS Answer: BD QUESTION 8Refer to the exhibit. SwitchA receives the frame with the addressing shown. According to the command output also shown in the exhibit, how will SwitchA handle this frame?

SwitchA# show mac-address-table
 < non-essential output omitted >

Destination Address	Address Type	VLAN	Destination Port
00b0.d056.fe4d	Dynamic	1	FastEthernet0/3
00b0.d043.ac2e	Dynamic	1	FastEthernet0/4
00b0.d0fe.ac32	Dynamic	1	FastEthernet0/5
00b0.d0da.cb56	Dynamic	1	FastEthernet0/6

Frame received by SwitchA:

Source MAC	Destination MAC	Source IP	Destination IP
00b0.d056.fe4d	00b0.d0da.cb56	192.168.40.5	192.168.40.6

A. It will drop the frame. B. It will forward the frame out port Fa0/3 only. C. It will flood the frame out all ports. D. It will flood the frame out all ports except Fa0/3. Answer: D

QUESTION 9 Which two statements describe the operation of the CSMA/CD access method? (Choose two.)

A. In a CSMA/CD collision domain, multiple stations can successfully transmit data simultaneously. B. In a CSMA/CD collision domain, stations must wait until the media is not in use before transmitting. C. The use of hubs to enlarge the size of collision domains is one way to improve the operation of the CSMA/CD access method. D. After a collision, the station that detected the collision has first priority to resend the lost data. E. After a collision, all stations run a random backoff algorithm. When the backoff delay period has expired, all stations have equal priority to transmit data. F. After a collision, all stations involved run an identical backoff algorithm and then synchronize with each other prior to transmitting data.

Answer: BE

QUESTION 10 Refer to the exhibit. SwitchA receives the frame with the addressing shown in the exhibit. According to the command output also shown in the exhibit, how will SwitchA handle this frame?

SwitchA# show mac-address-table
 < non-essential output omitted >

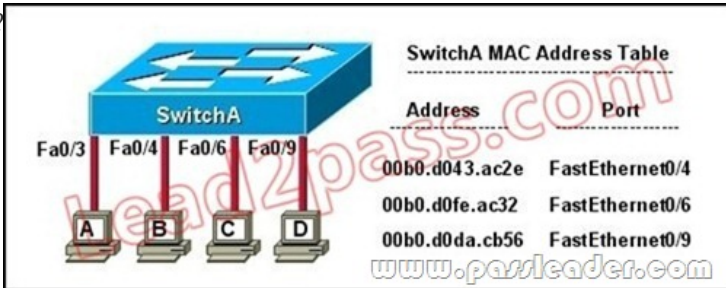
Destination Address	Address Type	VLAN	Destination Port
00b0.d056.fe4d	Dynamic	1	FastEthernet0/3
00b0.d043.ac2e	Dynamic	1	FastEthernet0/4
00b0.d0fe.ac32	Dynamic	1	FastEthernet0/5
00b0.d0da.cb56	Dynamic	1	FastEthernet0/6

Frame received by SwitchA:

Source MAC	Destination MAC	Source IP	Destination IP
00b0.d056.fe4d	00b0.d0da.895a	192.168.40.5	192.168.40.6

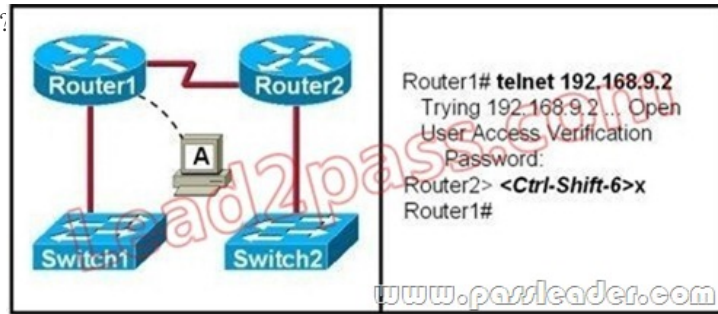
A. It will drop the frame. B. It will forward the frame out port Fa0/6 only. C. It will forward the frame out port Fa0/3 only. D. It will flood the frame out all ports. E. It will flood the frame out all ports except Fa0/3. Answer: E

QUESTION 11 Refer to the exhibit. The exhibit is showing the topology and the MAC address table. Host A sends a data frame to host D. What will the switch do when it receives the frame from host A?

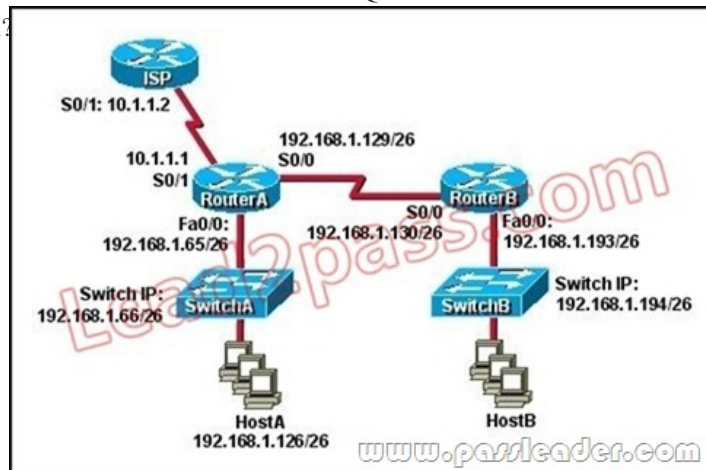


A. The switch will add the source address and port to the MAC address table and forward the frame to host D. B. The switch will discard the frame and send an error message back to host A. C. The switch will flood the frame out of all ports except for port Fa0/3. D. The switch will add the destination address of the frame to the MAC address table and forward the frame to host D.

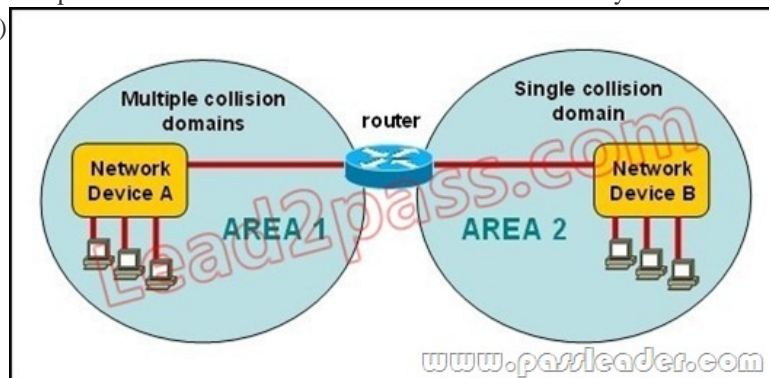
Answer: A QUESTION 12 Refer to the exhibit. If the resume command is entered after the sequence that is shown in the exhibit, which router prompt will be displayed?



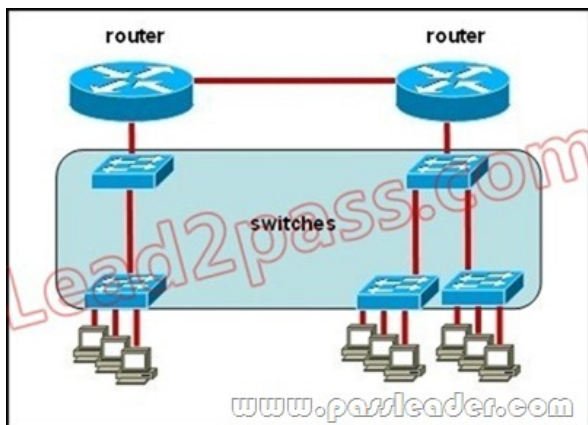
A. Router1> B. Router1# C. Router2> D. Router2# Answer: C QUESTION 13 Refer to the exhibit. Which default gateway address should be assigned to HostA?



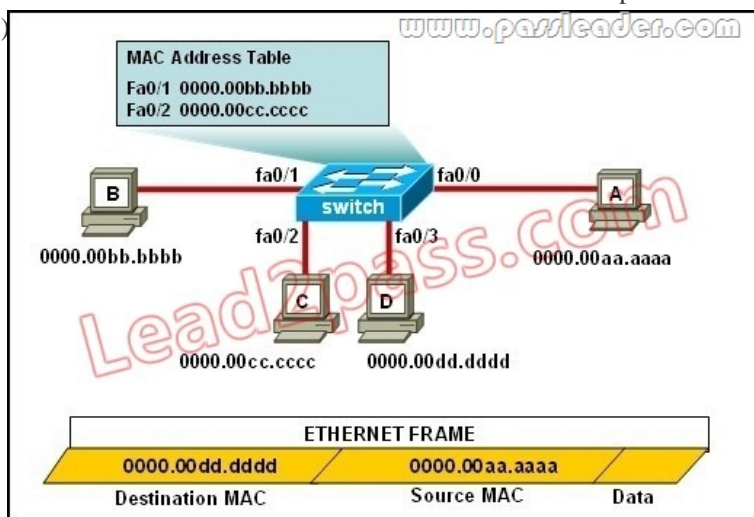
A. 192.168.1.1 B. 192.168.1.65 C. 192.168.1.66 D. 192.168.1.129 E. 10.1.1.1 F. 10.1.1.2 Answer: B QUESTION 14 Refer to the exhibit. A network has been planned as shown. Which three statements accurately describe the areas and devices in the network plan? (Choose three.)



A. Network Device A is a switch. B. Network Device B is a switch. C. Network Device A is a hub. D. Network Device B is a hub. E. Area 1 contains a Layer 2 device. F. Area 2 contains a Layer 2 device. Answer: ADE QUESTION 15 Which two options will help to solve the problem of a network that is suffering a broadcast storm? (Choose two.) A. a bridge B. a router C. a hub D. a Layer 3 switch E. an access point Answer: BD QUESTION 16 Refer to the exhibit. All devices attached to the network are shown. How many collision domains are present in this network?



A. 2B. 3C. 6D. 9E. 15 Answer: E QUESTION 17What does a host on an Ethernet network do when it is creating a frame and it does not have the destination address? A. drops the frameB. sends out a Layer 3 broadcast messageC. sends a message to the router requesting the addressD. sends out an ARP request with the destination IP address Answer: D QUESTION 18Refer to the exhibit. The ports that are shown are the only active ports on the switch. The MAC address table is shown in its entirety. The Ethernet frame that is shown arrives at the switch. What two operations will the switch perform when it receives this frame? (Choose two.)



A. The MAC address of 0000.00aa.aaaa will be added to the MAC address table.B. The MAC address of 0000.00dd.dddd will be added to the MAC address table.C. The frame will be forwarded out port fa0/3 only.D. The frame will be forwarded out fa0/1, fa0/2, and fa0/3.E. The frame will be forwarded out all the active ports. Answer: AD QUESTION 19A switch has 48 ports and 4 VLANs. How many collision and broadcast domains exist on the switch (collision, broadcast)? A. 4, 48B. 48, 4C. 48, 1D. 1, 48E. 4, 1 Answer: B QUESTION 20Which address type does a switch use to make selective forwarding decisions? A. source IP addressB. destination IP addressC. source and destination IP addressD. source MAC addressE. destination MAC address Answer: E Download the newest PassLeader 100-101 dumps from passleader.com now! 100% Pass Guarantee! 100-101 PDF dumps & 100-101 VCE dumps: <http://www.passleader.com/100-101.html> (238 Q&As) (New Questions Are 100% Available and Wrong Answers Have Been Corrected!) P.S. Free 100-101 PDF dumps download from Google Drive: https://drive.google.com/open?id=0B-ob6L_QjGLpWXpiS19TTDNrdzg (Explanation For Every Question Is Available!)