

## Be Successful In Your 70-689 Test With Passleader's 70-689 Certification Dumps (21-40)

QUESTION 21 You administer Windows 8 Enterprise client computers in your company network. You change settings on a reference computer by using the Windows Firewall with Advanced Security tool. You want to apply the same settings to other computers. You need to save the Windows Firewall with Advanced Security configuration settings from the reference computer. You also need to be able to import the configuration settings into a Group Policy object later. What should you do?

A. Run the netsh advfirewall export c:\settings.xml command. B. Run the netsh advfirewall export c:\settings.txt command. C. Run the netsh advfirewall export c:\settings.wfw command. D. Run the netsh firewall export c:\settings.xml command. Answer: C

QUESTION 22 You administer Windows 8 Pro computers in your company network. A server named Server1 runs Windows Server 2012. Server1 allows incoming VPN and Remote Desktop connections. A remote user requires access to files on Server1. You need to prevent the user from downloading any files from Server1 to his local computer. Your solution must ensure that the user can read the files on Server1. What should you do?

A. Create a new VPN connection. Disable local drive mappings. B. Create a new Remote Desktop connection. C. Set the Local Computer policy to Disable drives redirection for Remote Desktop Services. D. Create a new Remote Desktop connection. Set the Local Computer policy to Disable clipboard redirection for Remote Desktop Services. Answer: C

QUESTION 23 A company has 10 client computers that run Windows 8. An employee updates a device driver on her computer and then restarts the computer. Windows does not start successfully. You start the computer in Safe Mode. You need to identify the most recently installed driver and gather the maximum amount of information about the driver installation. What should you do?

A. In Device Manager, run a scan for hardware changes. B. In the Event Viewer console, display the Hardware Events log. C. In the Programs and Features Control Panel item, display the installed updates. D. Display the contents of the Windowsinfsetupapi.dev.log file. Answer: D

QUESTION 24 Employees are permitted to bring personally owned portable computers that run Windows 8 to the office. They are permitted to install corporate applications by using the management infrastructure agent and access corporate email by using Windows Mail. An employee's personally owned portable computer is stolen. You need to protect the corporate applications and email messages on the computer. Which two actions should you perform? (Each correct answer presents part of the solution. Choose two.)

A. Prevent the computer from connecting to the corporate wireless network. B. Disconnect the computer from the management infrastructure. C. Change the user's password. D. Initiate a remote wipe. Answer: CD

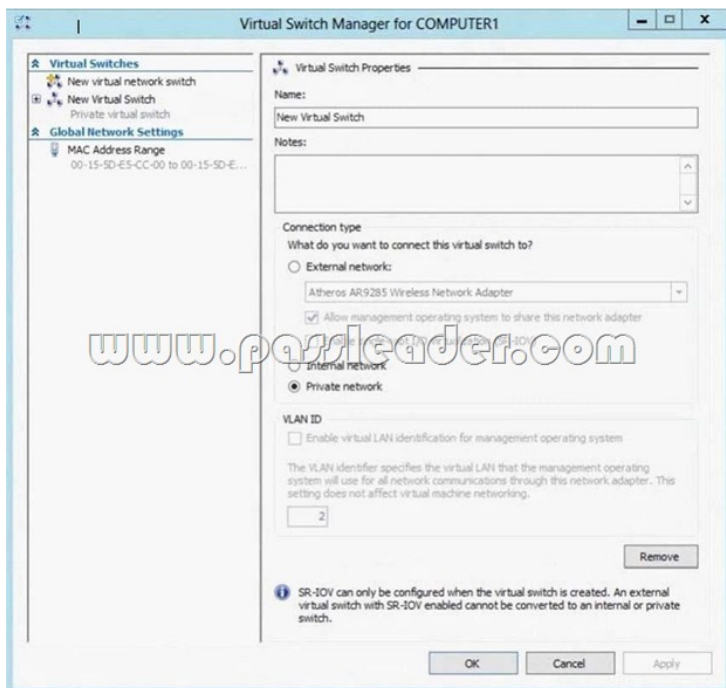
QUESTION 25 A company has an Active Directory Domain Services (AD DS) domain. All client computers run Windows 8. Portable client computers connect to the corporate wireless network. You have the following requirements:

- Prevent users from configuring a wireless network by using settings from a USB flash drive.
- Do not affect the use of other USB devices.

You need to create a Group Policy object (GPO) to meet the requirements. Which GPO should you create?

A. A GPO that disables the Allow only USB root hub connected Enhanced Storage Features policy setting. B. A GPO that enables wireless policy processing. C. A GPO that prohibits connections to mobile broadband networks when roaming. D. A GPO that configures Windows Connect Now settings. Answer: D

QUESTION 26 A company has an Active Directory Domain Services (AD DS) domain with one physical domain controller. All client computers run Windows 8. A client computer hosts a Windows 8 virtual machine (VM) test environment. The VMs are connected to a private virtual switch that is configured as shown in the Virtual Switch Manager exhibit:



You have the following requirements:

- Configure the test environment to allow VMs to communicate with the host machine.
- Minimize impact on the host machine.

You need to meet the requirements. What should you do?

A. Create a new virtual switch with a Private Network [CP1] connection type.

B. Create a new virtual switch with an ExternalNetwork connection type.

C. Change the VLAN ID of the private virtual switch to Enable Virtual LAN identification.

D. Create a new virtual switch with an Internal Network connection type.

Answer: D

QUESTION 27 A portable computer that runs Windows 8 uses a mobile broadband connection for the corporate wireless network. The computer also has a wired corporate network connection. The computer successfully downloads Windows updates when connected to either network. You need to ensure that the computer automatically downloads updates by using Windows Update only while connected to the wired corporate network connection. What should you do?

A. Set the corporate wireless network to metered.

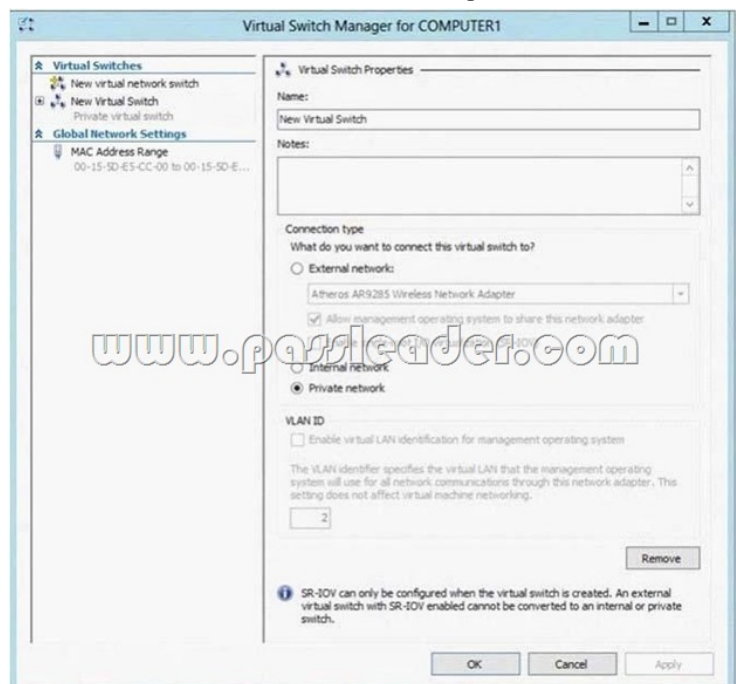
B. Set the corporate wireless network to non-metered.

C. Configure the Specify intranet Microsoft update service location local Group Policy setting.

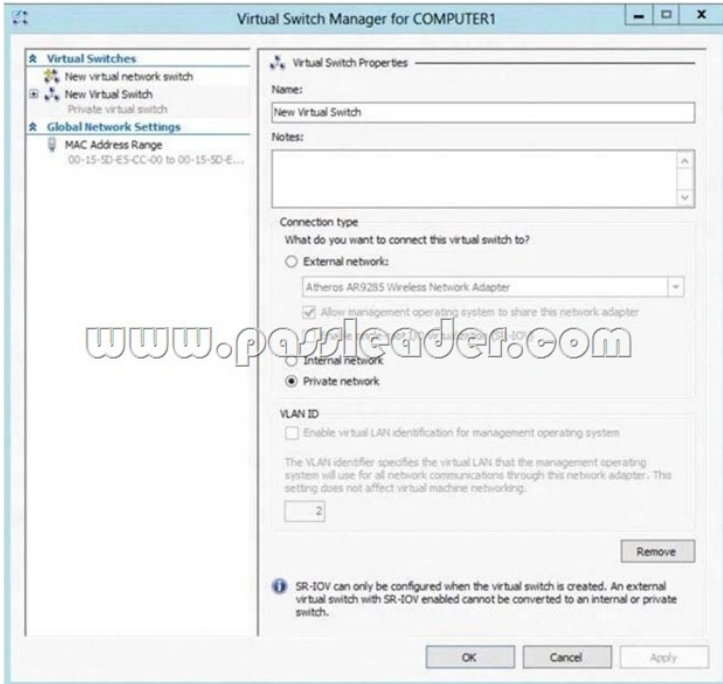
D. Configure a Windows Firewall connection security rule.

Answer: A

QUESTION 28 A company has an Active Directory Domain Services (AD DS) domain with one physical domain controller. All client computers run Windows 8. A client computer hosts a Windows 8 virtual machine (VM) test environment. The VMs are connected to a private virtual switch that is configured as shown in the Virtual Switch Manager exhibit:



The VMS are unable to connect to the domain controller. You have the following requirements: - Configure the test environment to allow VMs to communicate with the domain controller. - Ensure that the VMs can communicate with other VMS fl the test environment when the domain controller is unavailable. You need to meet the requirements. What should you do first?



A.&#160;&#160;&#160; Create a new virtual switch with an Internal Network connection type. B.&#160;&#160;&#160; Create a new virtual switch with a Private Network connection type. C.&#160;&#160;&#160; Create a new virtual switch with an External Network connection type. D.&#160;&#160;&#160; Change the connection type of the private virtual switch to Internal only. Answer: C

QUESTION 29 A portable computer that runs Windows 8 uses a mobile broadband connection for the corporate wireless network. The computer also has a wired corporate network connection. The computer successfully downloads Windows updates when connected to either network. You need to ensure that the computer automatically downloads updates by using Windows Update while also connected to the wireless corporate network connection. What should you do?

A.&#160;&#160;&#160; Set the corporate wireless network to metered. B.&#160;&#160;&#160; Set the corporate wireless network to non-metered. C.&#160;&#160;&#160; Configure the Specify intranet Microsoft update service location local Group Policy setting. D.&#160;&#160;&#160; Configure a Windows Firewall connection security rule. Answer: B

QUESTION 30 A company has an Active Directory Domain Services domain. All client computers run Windows 8 and are joined to the domain. You run the ipconfig command on a client computer. The following output depicts the results. Ethernet adapter Local Area Connection 3:

```
Ethernet adapter Local Area Connection 3:

Connection-specific DNS Suffix. . . :
IPv4 Address. . . . . : 192.168.1.102
Subnet Mask . . . . . : 255.255.255.0
Default Gateway . . . . . :

Tunnel adapter isatap.{DFCE21ED-2EE5-46BA-93BE-97743DE6FC94}:

Media State: . . . . . : Media disconnected
Connection-specific DNS Suffix. . . :
```

You need to ensure that you can establish a DirectAccess connection from the client computer to the network. What should you do? A.&#160;&#160;&#160; Create a new VPN connection. B.&#160;&#160;&#160; Remove the computer from the domain. C.&#160;&#160;&#160; Enable IPv6 on the network adapter. D.&#160;&#160;&#160; Configure a static IPv4 address. Answer: C



<http://www.passleader.com/70-689.html>] QUESTION 31 A company has an Active Directory Domain Services (AD DS) domain. All client computers run Windows 8. You need to minimize the amount of Trusted Platform Module (TPM) authorization information that is stored in the registry. What should you do? A. Enable Platform Configuration Register indices (PCRs) 0, 2, 4, and 11 for the Configure TPM validation profile for native UEFI firmware configuration policy setting. B. Create a Group Policy object (GPO) that disables the Configure the level of TPM owner authorization information available to operating system policy setting. C. Create a Group Policy object (GPO) that sets the Configure the level of TPM owner authorization information available to operating system policy setting to None. D. Create a Group Policy object (GPO) that enables the Turn on TPM Local Encryption policy setting.

Answer: C QUESTION 32 A company has an Active Directory Domain Services (AD DS) domain. All client computers run Windows 8 and are joined to the domain. You have the following requirements: - Ensure that files in shared network folders are available offline. - Minimize all data access times. - Reduce network bandwidth usage. You need to configure Group Policy settings to meet the requirements. What should you do first? A. Enable the Enable file synchronization on costed networks policy setting. B. Enable and configure the Configure slow-link mode policy setting. C. Enable and configure the specify administratively assigned Offline Files policy setting. D. Enable the Synchronize all offline files when logging on policy setting. Answer: B

QUESTION 33 A company has an Active Directory Domain Services (AD DS) domain. All client computers run Windows 8 and are joined to the domain. You have the following requirements: - Ensure that files in shared network folders are available offline. - Maximize efficiency for users who connect to shared network folders from a mobile device. You need to configure Group Policy settings to meet the requirements. What should you do first? A. Enable and configure the Configure slow-link mode policy setting. B. Enable the Enable file synchronization on costed networks policy setting. C. Enable the Synchronize all offline files when logging on policy setting. D. Enable and configure the Specify administratively assigned Offline Files policy setting. Answer: B

QUESTION 34 A company has a main office and several branch offices. The company has an Active Directory Domain Services (AD DS) domain. All client computers run Windows 8. All printers are deployed to all client computers by using Group Policy. When a user attempts to print from his portable client computer while at a branch office, the main office printer is set as his default printer. You need to ensure that a location-specific default printer for each branch office is set for the user. What should you do? A. Create a Group Policy object (GPO) that enables the Computer location policy setting. B. In the Manage Default Printers dialog box, select the Always use the same printer as my default printer option. C. In the Manage Default Printers dialog box, select the Change my default printer when I change networks option. D. Create a Group Policy object (GPO) that enables the Allow Print Spooler to accept client connections policy setting. Answer: C

QUESTION 35 A computer runs Windows 8. You install an application by running an .msi file. You need to apply a patch to the application. Which command should you run? A. `dism /Online /add-package:C:MyPatch.msp` B. `dism /get-AppPatches /get-PackageInfo:C:MyPatch.msp` C. `msiexec /x "C:MyPatch.msp"` D. `msiexec /p "C:MyPatch.msp"` Answer: D

QUESTION 36 A company has client computers that run Windows 8. Users can run applications that have been downloaded from the Internet only with administrator approval. You need to ensure that users can run downloaded applications without administrator approval. What should you do? A. Set the Internet zone privacy level to Low. B. Set the Internet zone security level to Medium. C. Set the User Account Control (UAC) settings to Never notify. D. Turn off Windows SmartScreen. Answer: A

QUESTION 37 You manage computers that run Windows 8. You plan to install a desktop app named MarketingApp on one of the client computers. You need to display a progress bar to the user while installing the app. Which command should you run? A. `msiexec /i marketingapp.msi /qn` B. `msiexec /i marketingapp.msi /qb` C. `msiexec /x marketingapp.msi /qb` D. `msiexec /x marketingapp.msi /qn` Answer: B

QUESTION 38 A company has client computers that run Windows 8. You set up new virtual private network (VPN) connections on all client computers. The VPN connections require the use of a smart card for authentication. Users are unable to connect to the corporate network by using the VPN connections. The connection properties are configured as shown in the exhibit. (Click the Exhibit button.)



You need to ensure that the client computers can connect to the corporate network. What should you do?  
A. Enable Challenge Handshake Authentication Protocol (CHAP). B. Change the VPN type to IKEv2. C. In the advanced settings, select Use preshared key for authentication. D. Change the authentication setting to Use Extensible Authentication Protocol (EAP). Answer: D

QUESTION 39 You update the video card driver on a portable computer that runs Windows 8. When a user connects the portable computer to an external monitor, the external monitor duplicates the display on the portable computer screen. You need to ensure that the user can display additional desktop space on the external monitor. What should you do? A. Run the DisplaySwitch /extend command. B. Start the computer from the Windows 8 installation media and perform a system image recovery. C. Roll back the video card driver to the previous version. D. Run the sic /scannow command. Answer: A

QUESTION 40 A company has client computers that run Windows 8. You attempt to roll back a driver for a specific device on a client computer. The Roll Back Driver button is unavailable in Device Manager. You need to roll back the driver to the previous version. What should you do first? A. In the system properties for hardware, modify the device installation settings. B. Disable driver signature enforcement. C. In the local Group Policy, modify the device installation restrictions. D. Run Device Manager as an Administrator. Answer: D

Be Successful In Your 70-689 Test With Passleader's 70-689 Certification Dumps <http://www.passleader.com/70-689.html>