

Discount Passleader VCP5-DCV Exam Dumps Help You Pass Exam Quickly

QUESTION 1 An administrator is working to implement Storage Profiles in their environment. Which two ways can storage capabilities be generated? (Choose two.) A. They are generated by Datastore Clusters as LUNs are added to the cluster. B. They are automatically determined by the Storage Profile when it is created. C. They can be retrieved from the array through the VMware APIs for Storage Awareness (VASA). D. They can be manually generated by the administrator. Answer: CD

QUESTION 2 Which VMware solution uses the security of a vSphere implementation and provides linked-clone technology to virtual desktops? A. VMware ACE B. VMware View C. VMware Workstation D. VMware ThinApp Answer: B

QUESTION 3 Which two conditions will prevent a virtual machine from being successfully migrated using Storage vMotion? (Choose two.) A. The virtual machine has an RDM. B. The virtual machine has Fault Tolerance enabled. C. The virtual machine is running on a vSphere 5.x Standard host. D. The virtual machine has a disk stored on an NFS datastore. Answer: BC

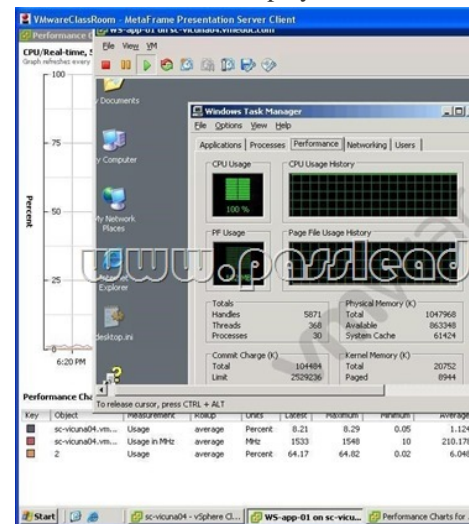
QUESTION 4 Under which two conditions can vStorage APIs for Array Integration (VAAI) provide a performance benefit? (Choose two.) A. When a virtual disk has VMDK files stored on an NFS datastore. B. When a virtual disk is created using the New Virtual Machine wizard. C. When cloning a virtual machine with snapshots. D. When a virtual disk is deleted. Answer: AD

QUESTION 5 An administrator is enabling Enhanced vMotion Compatibility (EVC) in a DRS cluster. The administrator wants only hosts with the newest Intel processors added to the cluster. Which setting satisfies this requirement? A. The baseline with the most CPUs listed B. The baseline with the fewest CPUs listed C. Any baseline that contains Future Intel processors D. Create a new baseline and add only the latest processor family Answer: D

Discount Passleader VCP5-DCV Exam Dumps Help You Pass Exam Quickly <http://www.passleader.com/vcp5-dcv.html>

QUESTION 6 Which two conditions must exist on all hosts in the cluster if Enhanced vMotion Compatibility (EVC) is used? (Choose two.) A. The cluster must be enabled for DRS. B. All hosts in the cluster must be running ESX/ESXi 3.5 Update 2 or later. C. All hosts in the cluster must have hardware virtualization support enabled. D. The cluster must be enabled for HA. Answer: BC

QUESTION 7 Click the Exhibit button. An administrator has deployed a new virtual machine on an ESXi 5.x host. Users are complaining of poor performance on the application running on the virtual machine. Performance tools display the results shown in the exhibit. Which two tasks might improve the user experience? (Choose two.)



A. Add a vCPU to the virtual machine B. Remove CPU affinity on the advanced CPU setting of the virtual machine C. Migrate the virtual machine to another ESXi host D. Remove the limit on the CPU settings of the virtual machine Answer: AD

QUESTION 8 An administrator notices that when a virtual machine is placed into a resource pool, a warning indicates that the virtual machine will receive a very large percentage of the total shares for memory. Which action can be taken to resolve this problem? A. Increase the memory resource allocation to the resource pool. B. Increase the share value for the resource pool. C. Change the shares setting from custom to high, medium, or low for the

virtual machine. D. Decrease the memory allocation for the virtual machine. Answer: C

QUESTION 9 An administrator views the Fault Tolerance pane of the Summary tab of a virtual machine and finds that the current status is Not Protected. What are two vSphere Fault Tolerance states that would cause the virtual machine to not be protected? (Choose two.)

A. Stopped - Fault Tolerance has been stopped on the secondary virtual machine. B. Need Secondary VM - The primary virtual machine is running without a secondary virtual machine; and is not protected

C. Need Primary VM - The secondary virtual machine is running, and a new primary virtual machine cannot be generated. D. Disabled - Fault Tolerance is disabled. Answer: BD

QUESTION 10 Which two conditions prevent the application of a host profile to an ESXi 5.x host? (Choose two.)

A. The host has multiple profiles attached. B. The host has not been placed into maintenance mode. C. The host is running virtual machines. D. The host is an ESXi host. Answer: BC

Discount Passleader VCP5-DCV Exam Dumps Help You Pass Exam Quickly <http://www.passleader.com/vcp5-dcv.html>

QUESTION 11 An administrator is editing the IP allocation policy for a vApp. Which three options are available? (Choose three.)

A. Automatic B. Roaming C. Transient

D. DHCP E. Fixed Answer: CDE

QUESTION 12 ACME Junkmail Incorporated has been utilizing templates in their environment. They are running a 10-node ESXi 5.x Cluster and DRS has not been configured. Several virtual machines have been deployed from this template and successfully powered on, but a newly deployed virtual machine will not power on. There appear to be adequate CPU and Memory resources available on the host. Which three things can be done to allow more virtual machines to be deployed into the cluster from this template? (Choose three.)

A. Select a different datastore for the virtual machine B. Move the swap file to a different location

C. Deploy the virtual machine to a different host using the same datastore D. Enable DRS on the cluster to balance the virtual machine load out across hosts E. Increase the virtual machine memory reservation Answer: ABE

QUESTION 13 What are three valid objects to place in a vApp? (Choose three.)

A. Folders B. Hosts C. Resource pools D. vApps

E. Virtual machines Answer: CDE

QUESTION 14 Which three Storage I/O Control conditions might trigger the Non-VI workload detected on the datastore alarm? (Choose three.)

A. The datastore is connected to an ESX/ESXi 4.0 host that does not support Storage I/O Control. B. The datastore is on an array that is performing system tasks such as replication. C. The datastore is utilizing active/passive multipathing or NMP (Native Multi-Pathing). D. The datastore is storing virtual machines with one or more snapshots. E. The datastore is connected to an ESX/ESXi 4.0 host that is not managed by vCenter. Answer: ABE

QUESTION 15 An administrator has just finished deploying a vApp for a web service. What three options are available to the administrator for IP allocation within the vApp? (Choose three.)

A. Transient B. Fixed C. DHCP D. Bridged E. NAT Answer: ABC

Discount Passleader VCP5-DCV Exam Dumps Help You Pass Exam Quickly <http://www.passleader.com/vcp5-dcv.html>