

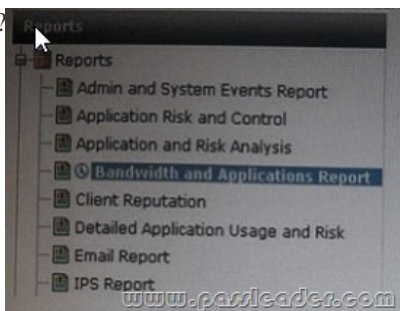
[Feb-2017 Dumps Training PassLeader New NSE5 293q VCE and PDF Dumps To Pass Exam (Part A)

New Updated NSE5 Exam Questions from PassLeader NSE5 PDF dumps! Welcome to download the newest PassLeader NSE5 VCE dumps: <http://www.passleader.com/nse5.html> (293 Q&As) Keywords: NSE5 exam dumps, NSE5 exam questions, NSE5 VCE dumps, NSE5 PDF dumps, NSE5 practice tests, NSE5 study guide, NSE5 braindumps, NSE 5 - Fortinet Network Security Analyst Exam P.S. Free NSE5 dumps download from Google Drive:

https://drive.google.com/open?id=0B-ob6L_QjGLpU0FrbTh1X3JMSmM **NEW QUESTION 1** What output profiles can you confine for report event notifications? (Choose two.) A. SMSB. Forward to another FortiAnalyzer deviceC. Upload to a serverD. Email **Answer: D** **NEW QUESTION 2** What are the main management wizard used in Device Manager? A. Add Device, Provisioning Templates, and View InstallationB. Add Device, Install Wizard, and Import PolicyC. Script, Configuring CLI-Objects, and Re-install PolicyD. View Installation, Import Policy, and Script **Answer: D** **NEW QUESTION 3** A user creates a policy package with two installation targets, as shown in the exhibit. When the install operation is performed, which two statements are correct concerning the Install On column in the policy configuration? (Choose two.)

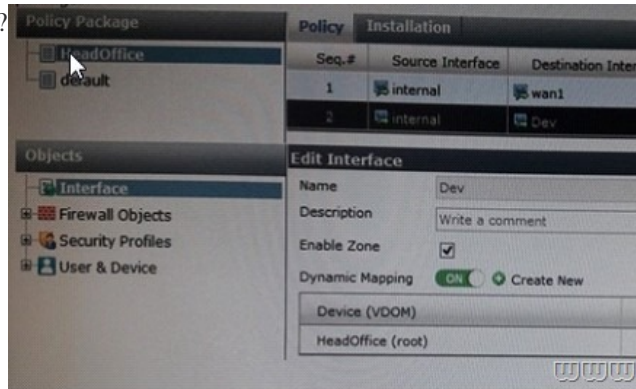


A. Policy ID 3 will not be installed on any FortiGate device.B. Policy ID 3 will not be installed on both FortiGate device.C. Policy ID 2 will only on the HeadOffice FortiGate device.D. Install On column values represent successful installations. **Answer: B** **NEW QUESTION 4** Which two statements correctly names the Administrative Domains modes supported on FortiManager? (Choose two.) A. Normal and AnalyzerB. Backup and AnalyzerC. Normal, Backup, and CollectorD. Normal and Backup **Answer: AB** **NEW QUESTION 5** Refer to the exhibit. What does the clock icon denote beside the Bandwidth and Application Report?



A. It is a custom report.B. It is an imparted report from either a different FortiAnalyzer device or a different (but supported) ADOM.C. It is h the process of generating.D. It is a scheduled report. **Answer: C** **NEW QUESTION 6** Which two statements are correct regarding administrative users and accounts? (Choose two.) A. Administrative user accounts can exist locally or remotely.B. Administrative user login information is available to all administrators through the Web- based.C. Administrative users must be assigned an administrative profile.D. Administrative user access is restricted by administrative profiles only. **Answer: BD** **NEW QUESTION 7** What effect do administrative domains (ADCMs) have on report settings? (Choose two.) A. Hone. ADOMs cannot be used with reports.B. Reports must be configured with (her own ADOM.C. Chart Library, Macro Library, Dataset Library, and Output Profile become ADOM- specific.D. Dataset Library becomes global for al ADOMs. **Answer: AB** **NEW QUESTION 8** Which statement is true regarding FortiAnalyzer models? A. Al physical appliances can support the same number of G8 per day of logs.B. Both physical and virtual appliances have same license file.C. Al physical appliances have

the same storage capacity.D. The virtual appliance license determines number of devices supported and amount of traffic that can be collected. **Answer: C** **NEW QUESTION 9**The service access settings for a FortiManger network interface relate to which product feature? A. Device MangerB. Policy & ObjectsC. FortiGuardD. FortiView **Answer: B** **NEW QUESTION 10**What is the primary difference between raw format logs and formatted format logs? A. Raw logs can be viewed in the CLI only.B. Raw logs display logs as they appear within the log file.C. Raw logs &e more human-consumable than formatted format logs.D. Raw logs cannot be downloaded into .csv format. **Answer: C** **NEW QUESTION 11**Which three statements are true regarding Administrative Domains (ADOMs)? (Choose three.) A. ADOMs are a way to group devices for administrators to monitor and manage.B. Administrators with the standard_user administrator profile can view al ADOMs.C. The Web-based navigation changes when ADOMs are enabled.D. The admin administrator can assign one device to multiple ADOMs.E. The admin administrator can assign more than one ADOM to a single administrator. **Answer: ADE** **NEW QUESTION 12**Which two statements are correct concerning the revision history functionality? (Choose two.) A. When a modified configuration is installed, FortiManger creates a new revision.B. The diff feature can be used to compare two revisions.C. The retrieve button downloads the managed devices revision history.D. The auto update feature automatically changes made from FortiManager. **Answer: D** **NEW QUESTION 13**What are three different methods you can employ to send event notifications when an event occurs that matches a configured that matches a configured event handler? (Choose three.) A. EmailB. SMSC. SNMPD. IME. Syslog **Answer: ACE** **NEW QUESTION 14**Refer to the exhibit, An administrator create a new interface object named Dev and configured dynamic mapping for the wan2 interface on the Head Office FortiGate. A new policy from internal to Dev is configured. Which statements is correct regarding the installation of the Head Office policy package?



A. A new zone named Dev with member interface wan2 and a poky from internal to Dev will be created on the FortiGate device.
 B. A new poky from internal to wan2 will be created locally on the FortiGate.C. Dev is FortiManager reference for interface on the HeadOffice FortiGate. No zone is created on the FortiGate.D. The install will fail because wan2 cannot be mapped to Dev. This is not a valid configuration. **Answer: C** **NEW QUESTION 15**FortiAnalyzer centralizes which functions? (Choose three.) A. Network analysisB. Graphical reportingC. Content archiving / data miningD. Vulnerability assessmentE. Security log analysis / forensics **Answer: ABD** **NEW QUESTION 16**Which two statements are correct for configuration changes made by FortiManger scripts? (Choose two.) A. When run the device database, you can install changes to the managed FortiGate devices using the installation wizard.B. When run the device database, changes are automatically installed to the managed FortiGate devices.C. When run on managed devices directly, changes are automatically installed to the managed FortiGate devices.D. When run on managed devices directly, you can install changes to the managed FortiGate devices using the installation wizard. **Answer: AC** **NEW QUESTION 17**If RAID isn't supported, what are other types of backup mechanisms (i.e.methods to preserve your log data in the event of disk failure, deletion, or corruption)? (Choose three.) A. Backing up logs through the Web-based manager or CLI.B. Forwarding logs a syslog server.C. Uplaoding logs to an FTP, SFTP, or SCP server.D. Archiving logs.E. Enabling full archiving. **Answer: DE** **NEW QUESTION 18**Which two statements are true regarding FortiAnalyzer 's treatment of high availability (HA) dusters? (Choose two.) A. FortiAnalyzer distinguishes different devices by their serial number.B. FortiAnalyzer receives logs from d devices in a duster.C. FortiAnalyzer receives bgs only from the primary device in the cluster.D. FortiAnalyzer only needs to know (he serial number of the primary device in the cluster-it automatically discovers the other devices. **Answer: AB** **NEW QUESTION 19**Which two statements are true regarding content archiving, also known as Data Leak Prevention (DLP) archiving? (Choose two.) A. Allows full and summary archiving.B. It is configured globally for all policies.C. The default behavior is to do full archiving.D. The DLP engine examines email, FTP, NNTP, and web traffic. **Answer: D** **NEW QUESTION 20**Which two statements are correct regarding the Import al Objects' setting h the import policy wizard? (Choose two.)

A. All used and unused objects will be imported into the ADOM object database. B. Only used objects will be imported into the ADOM object database. C. FortiManager allows only policy dependent objects to be imported into an ADOM object database. D. Any unused object on the FortiGate device will be deleted with the first policy from FortiManager. **Answer: CD NEW QUESTION 21** Which statement describes a "modified" device settings' status in the Configuration and Installation Status widget of a managed FortiGate device? A. Configuration changes were made directly on the managed device. B. Configuration changes were made from Device Imager for a managed FortiGate device. C. Configuration changes were installed to a managed FortiGate device. D. Configuration changes in Device Manager no longer match the latest revision in the device's revision history. **Answer: B NEW QUESTION 22** Which three statements are true regarding RAID? (Choose three.) A. RAID is supported on all FortiAnalyzer models (both hardware appliances and virtual appliances). B. RAID backs up log information. C. RAID requires identical drives. D. RAID levels determine how data is distributed across drives. E. RAID status is available via the CLI only. **Answer: CDE NEW QUESTION 23** Which two statements are correct regarding the FortiManager HA cluster? (Choose two.) A. HA synchronization is done over TCP port 5199. B. HA synchronization is done over TCP port 703. C. Changes to the configuration database are possible from the HA secondary FortiManager, which will synchronize the changes to other cluster devices. D. Changes to the configuration database are possible from the HA primary FortiManager, which will synchronize the changes to other cluster devices. **Answer: BC NEW QUESTION 24** How does the Log View page display logs when ADOMs are enabled? A. The Log View page displays logs in ADOMs together so they appear as single device. B. The Log View page displays logs per ADOM. C. The Log View page cannot display raw logs when ADOMs are enabled. D. The Log View page cannot display logs in real-time when ADOMs are enabled. **Answer: B NEW QUESTION 25** When configuring FortiGuard on FortiManager. Which two statements are correct regarding Allow Push Update settings configured in the FortiGuard Antivirus and IPS Settings? (Choose two.) A. If an urgent or critical FortiGuard Antivirus and/or IPS update becomes available, the FortiManager built-in FDS will send push update notifications to each managed device. B. If an urgent or critical FortiGuard Antivirus and/or IPS update becomes available, the FortiManager built-in FDS will send push update notifications. C. FortiManager's built-in FDS service may not correctly receive push updates if the external facing IP address of any intermediary NAT device is dynamic. D. FortiManager's built-in FDS service does not allow an administrator to override the default FortiManager IP address and port used by the FDN to send update messages. **Answer: BD** Download the newest PassLeader NSE5 dumps from passleader.com now! 100% Pass Guarantee! NSE5 PDF dumps & NSE5 VCE dumps: <http://www.passleader.com/nse5.html> (293 Q&As) (New Questions Are 100% Available and Wrong Answers Have Been Corrected! Free VCE simulator!) P.S. Free NSE5 Exam Dumps Collection On Google Drive: https://drive.google.com/open?id=0B-ob6L_QjGLpU0FrbTh1X3JMSmM