

## [New Exam Dumps The Best PassLeader 300-075 Exam Questions With Free VCE Download

Passed 300-075 exam with the best PassLeader 300-075 exam dumps now! PassLeader are supplying the latest 100q 300-075 vce and pdf exam dumps covering all the new questions and answers, it is 100 percent pass ensure for 300-075 exam. PassLeader offer PDF and VCE format exam dumps, and free version VCE player is also available. Visit [passleader.com](http://passleader.com) now and download the 100 percent passing guarantee 100q 300-075 braindumps to achieve your new 300-075 certification easily! keywords: 300-075 exam dumps, 100q 300-075 exam questions, 300-075 pdf dumps, 300-075 vce dumps, 100q 300-075 braindumps, 300-075 study guide, 300-075 practice test, Implementing Cisco IP Telephony & Video, Part 2 v1.0 Exam

Why Not Try **PassLeader New Premium 300-075**

**Pass4sure** **PL PassLeader** Leader of IT Certification

Not Available Not In Stock

**BONUS !!!** Free VCE Player

100 Q&As Price: \$99.9

Coupon Code -- CELEB

QUESTION 1 Which statement is true regarding the configuration of SAF Forwarder? A. In a multisite dial plan, SAF Forwarders may exist in multiple autonomous systems. B. The client label that is configured in Cisco Unified Communications Manager must match the configuration on the SAF Forwarder router. C. There should not be multiple nodes of Cisco Unified Communications Manager clusters acting as SAF clients. D. The destination IP address must match the loopback address of the SAF router.

Answer: A QUESTION 2 Which three devices support the SAF Call Control Discovery protocol? (Choose three.) A. Cisco Unified Border Element B. Cisco Unity Connection C. Cisco IOS Gatekeeper D. Cisco Catalyst Switch E. Cisco IOS Gateway F. Cisco Unified Communications Manager

Answer: AEF QUESTION 3 Which component of Cisco Unified Communications Manager is responsible for sending keepalive messages to the Service Advertisement Framework forwarder? A. Call Control Discovery requesting service B. Hosted DNS service C. Service Advertisement Framework client control D. Cisco Unified Communications Manager database E. Service Advertisement Framework-enabled trunk F. gatekeeper

Answer: C QUESTION 4 What is an advantage of TEHO? A. TEHO implemented with ISRs eliminates PSTN toll charges. B. TEHO implemented with ISRs can reduce PSTN toll charges. C. TEHO implemented with AAR reduces toll charges. D. TEHO implemented with CFUR reroutes calls.

Answer: B QUESTION 5 Which two options are valid service parameter settings that are used to set up proper video QoS behavior across the Cisco Unified Communications Manager infrastructure? (Choose two.) A. DSCP for Video Calls when RSVP Fails B. Default Intraregion Min Video Call Bit Rate (Includes Audio) C. Default Interregion Max Video Call Bit Rate (Includes Audio) D. DSCP for Video Signaling E. DSCP for Video Signaling when RSVP Fails

Answer: AC QUESTION 6 Which sign is prefixed to the number in global call routing? A. - B. + C. # D. @ E. & F. \* Answer: B QUESTION 7 Scenario: There are two call control systems in this item. The Cisco UCM is controlling the DX650, the Cisco Jabber for Windows Client, and the 7965 and 9971 Video IP Phones. The Cisco VCS and TMS control the Cisco Telepresence Conductor, the Cisco TelePresence MCU, and the Cisco Jabber TelePresence for Windows DNS Server:

```
ip dns server
ip host _cisco-uds._tcp.hq.cisco.com srv 1 1 8443 10
ip host _cisco-uds._tcp.hq.cisco.com srv 1 1 8443 10
ip host pub10x-hq.collab10x.cisco.com 10.1.5.15
ip host sub10x-hq.collab10x.cisco.com 10.1.5.16
ip host pub10x-hq.hq.collab10x.cisco.com 10.1.5.15
ip host sub10x-hq.hq.collab10x.cisco.com 10.1.5.16
ip host hq.cisco.com 10.1.5.1
```

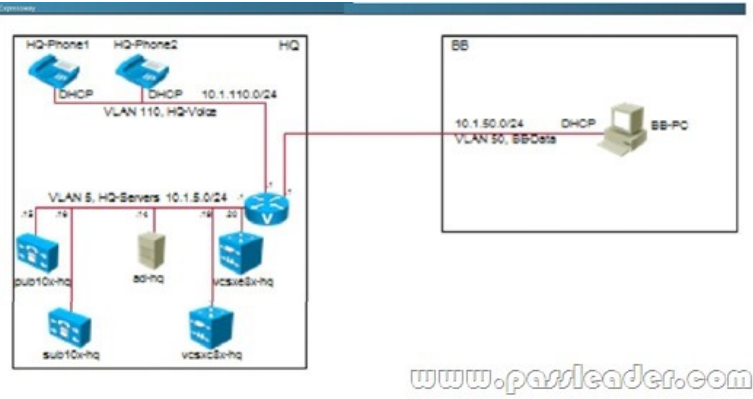
[www.passleader.com](http://www.passleader.com)

Device Pool:

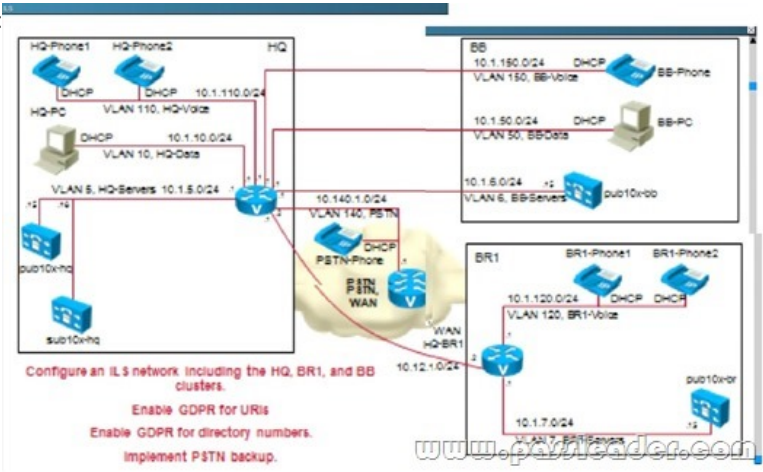
| Name     | Cisco Unified CM Group | Region   | Group   |
|----------|------------------------|----------|---------|
| Default1 | Default                | Default1 | CMLocal |
| Default  | Default                | Default  | CMLocal |
| GSM      | Default                | GSM      | CMLocal |

[www.passleader.com](http://www.passleader.com)

Expressway:

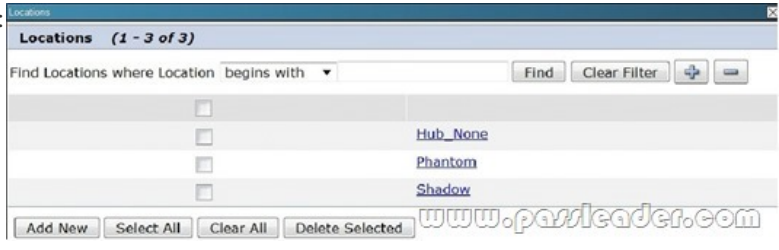


ILS:



Configure an ILS network including the HQ, BR1, and BB clusters.  
 Enable GDPR for URIs  
 Enable GDPR for directory numbers.  
 Implement PSTN backup.

Locations:

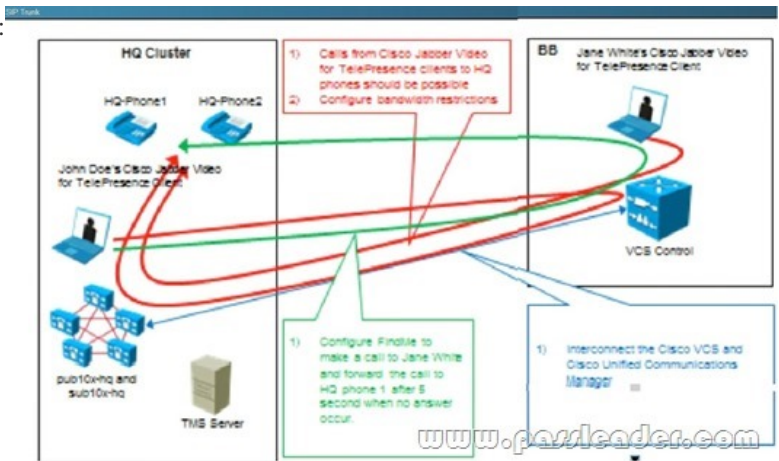


```
MRA:ip host_collab-edge_tls.hq.cisco.com SRV 1 1 8443 vcsxe8x-
hq.hq.collab10x.cisco.com
ip host vcsxe8x-hq.hq.collab10x.cisco.com 10.1.5.20
```

Speed Dial:

| Phone       | Speed Dial Button | Speed Dial Destination |
|-------------|-------------------|------------------------|
| HQ phone 1  | 1                 | hq2@cisco.lab          |
| HQ phone 1  | 2                 | br1@cisco.lab          |
| HQ phone 1  | 3                 | bb@cisco.lab           |
| HQ phone 2  | 1                 | hq1@cisco.lab          |
| HQ phone 2  | 2                 | br1@cisco.lab          |
| HQ phone 2  | 2                 | br1@cisco.lab          |
| HQ phone 2  | 3                 | bb@cisco.lab           |
| BR1 phone 1 | 1                 | hq1@cisco.lab          |
| BR1 phone 1 | 2                 | hq2@cisco.lab          |
| BR1 phone 1 | 3                 | bb@cisco.lab           |
| BB phone    | 1                 | hq1@cisco.lab          |
| BB phone    | 2                 | hq2@cisco.lab          |

SIP TRUNK:



What two tasks must be completed in order to support calls between the VCS controlled endpoints and the Cisco Unified CM endpoints? (Choose two.)  
 A. Media Resource Group List.  
 B. Configure a SIP trunk on the Cisco Unified CM to point to the Cisco VCS.  
 C. Configure a neighbor zone on the Cisco Unified CM to point to the Cisco VCS.  
 D. Configure a SIP trunk on the Cisco VCS to point to the Cisco Unified CM.  
 Answer: B, C

Why Not Try **PassLeader New Premium 300-075 Exam Dumps?**

**Pass4sure**

Not Available  
Not In Stock

**PL PassLeader**  
Leader of IT Certifications

**BONUS !!!**  
Free VCE Player

100 Q&As  
Price: \$99.99

Coupon Code -- CELEB

**TEST KING**

Not Available  
Not In Stock

<http://www.passleader.com/300-075.html>