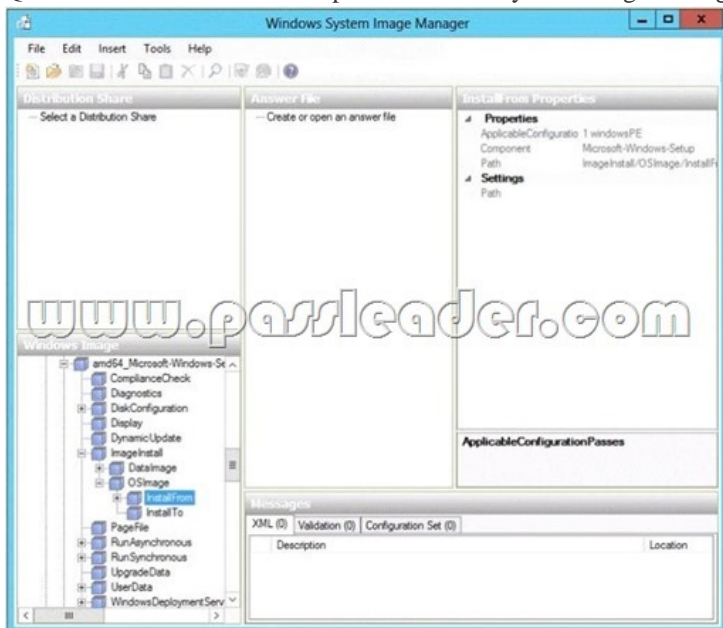


(NEW) PassLeader Microsoft 74-697 Study Materials With Real Exam Questions And Answers

Vendor: Microsoft Exam Code: 74-697 Exam Name: OEM Preinstallation



QUESTION 1 A technician opens Windows System Image Manager as shown in the following exhibit. (Click the Exhibit button.)



The technician fails to configure any component settings in Windows System Image Manager (Windows SIM). You need to tell the technician what to do before modifying the component settings in Windows SIM. What should you tell the technician to do?

A. Create a distribution share. B. Copy a Windows 8 image to a different location. C. Create an answer file. D. Create a catalog file. Answer: C

QUESTION 2 You have a technician computer named Computer1 and a reference computer named Computer2. You plan to customize the profile settings on Computer2 by logging on to Computer2. You need to ensure that the current user profile is copied to the default user profile before the image of Computer2 is captured. To which configuration pass in the unattended answer file should you add the CopyProfile settings?

A. auditSystem B. offlineServicing C. auditUser D. windowsPE E. generalize F. oobeSystem G. specialize Answer: G

QUESTION 3 You work for are an OEM system builder. A customer assembles a computer and plans to purchase an OEM DVD of Windows 8 to install on the computer. The customer plans to downgrade to Windows 7, and then to resell the computer at a later date. What should you tell the customer?

A. The customer can purchase the OEM DVD of Windows 8, but must install Windows 8. The customer can then transfer the software and the license to someone else. B. The customer can purchase the OEM DVD of Windows 8, and then install Windows 7 Professional. C. Only an OEM system builder can preinstall Windows 8 OEM on hardware supplied by the OEM system builder. D. The customer can purchase the OEM DVD of Windows 8, but must install Windows 8. The customer cannot transfer the software or the license to anyone else. Answer: A

QUESTION 4 You plan to capture a Windows 8 reference installation. The reference installation contains several third-party drivers for USB devices. You need to ensure that the third-party device drivers are preserved in the captured Windows image. Which component should you configure in the answer file?

A. Microsoft-Windows-PnpCustomizationsNonWinPE B. Microsoft-Windows-Setup C. Microsoft-Windows-Deployment D. Microsoft-Windows-PnpSysprep Answer: A

QUESTION 5 You have a Windows 8 image. You plan to deploy the image to several client computers. The client computers will be delivered to several different customers. You plan to provide all of the customers with the ability to perform a push-button reset of their computers from recovery media. The push-button

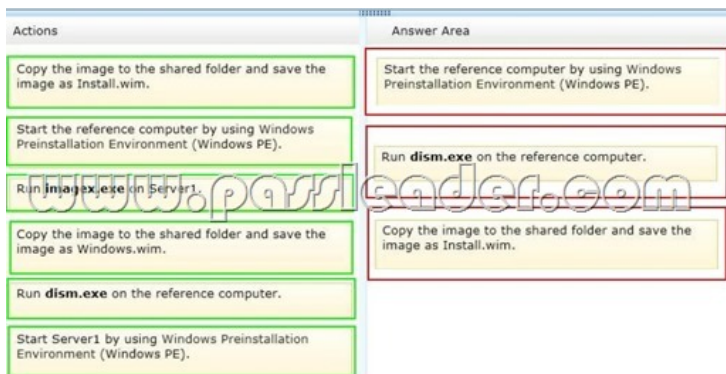
reset will include a script that will repartition the hard disk drives automatically. You need to identify which encoding format must be used for the script file. Which encoding format should you identify? A. Unicode B. BigEndianUnicode C. ANSI D. UTF-8 Answer: D



<http://www.passleader.com/74-697.html>] QUESTION 6 You are an OEM system builder. A customer purchases an OEM System Builder pack for Windows 8 Pro to install under a Personal Use License. Who is responsible for providing support to the customer under a Personal Use License? A. a Microsoft Authorized Distributor B. the customer C. Microsoft D. the OEM system builder Answer: D QUESTION 7 Drag and Drop Question You have a Windows Assessment and Deployment Kit (Windows ADK) environment that contains a file server named Served. Served runs Windows Server 2012. You copy the Windows 8 installation media to a shared folder on Served. You install Windows 8 on a reference computer, and then you generalize the installation. You need to replace the image in the share with an image of the reference computer. Which three actions should you perform in sequence? (To answer, move the appropriate three actions from the list of actions to the answer area and arrange them in the correct order.)



Answer:



QUESTION 8 You have a reference computer named Computer1 that runs Windows 7. You plan to run sysprep.exe several times on Computer1. You need to prevent the Windows Product Activation clock from being reset on Computer1. What should you do? A. Set the SkipRearm option in Unattend.xml to 0. B. Set the ProductKey option in Sysprep.inf to 00000-00000-00000-00000-00000. C. Set the SkipRearm option in Unattend.xml to 1. D. Set the ProductKey option in Sysprep.inf to XXXXX-XXXXX-XXXXX-XXXXX-XXXXX. Answer: C

QUESTION 9 You work for an OEM system builder named Fabrikam, Inc. You plan to deploy an image from a network share. You need to ensure that when Windows Preinstallation Environment (Windows PE) starts, Plug and Play devices are installed, settings in Unattend.xml are applied, and network resources are loaded. Which command should you execute from Startnet.cmd? A. wpeinit.exe B. drvload.exe C. netsh.exe D. winpeshl.exe Answer: A

QUESTION 10 You use Windows Deployment Services (WDS) to deploy Windows operating system images. You create a custom image of Windows Preinstallation Environment (Windows PE). You need to ensure that client computers use Pre-Boot Execution Environment (PXE) to load the Windows PE image. To which node in the Windows Deployment Services console should you add the image? A. Install Images

B. Multicast Transmissions C. Boot Images D. Pending Devices E. Legacy Images Answer: C QUESTION 11 You work for an OEM system builder. You use Windows Deployment Services (WDS) to deploy Windows operating system images. WDS contains a 32-bit boot image. You receive a new client computer model that is 64-bit. You add a 64-bit install image of Windows 8 to WDS. You attempt to deploy a new install image to the new computer model by using WDS. The boot image loads on the new computer, but you fail to apply the install image. From Diskpart, you run the List disk command and you discover that no objects are found. You need to ensure that you can deploy the new install image to the new computer model. What should you do? A. Add the 64-bit driver for the mass storage device into the boot image. B. Add the 32-bit driver for the mass storage device into the boot image. C. Add the 64-bit driver for the mass storage device into the install image. D. Add the 32-bit driver for the mass storage device into the install image. Answer: B

Thank You for Trying Our Product, PassLeader Certification Exam Features: ? More than 99,900 Satisfied Customers Worldwide. ? Average 99.9% Success Rate. ? Free Update to match latest and real exam scenarios. ? Instant Download Access! No Setup required. ? Questions & Answers are downloadable in PDF format and VCE test engine format. ? Multi-Platform capabilities - Windows, Laptop, Mac, Android, iPhone, iPod, iPad. ? 100% Guaranteed Success or 100% Money Back Guarantee. ? Fast, helpful support 24x7. PassLeader Microsoft 74-697 Study Materials With Real Exam Questions And Answers

<http://www.passleader.com/74-697.html>]