

(NEW) Reliable Free PassLeader Premium Microsoft 70-982 PDF Brain Dumps and Study Guides

Vendor: Microsoft Exam Code: 70-982 Exam Name: Recertification for MCSE: Desktop Infrastructure



QUESTION 1 Your network contains an Active Directory domain named contoso.com. The domain contains an internal network and a perimeter network. The perimeter network contains a server named Gateway1 that has the Remote Desktop Gateway role service installed. From the Internet, all of the domain users can access several Remote Desktop Session Host (RD Session Host) servers on the internal network by using Remote Desktop Gateway (RD Gateway) on Gateway1. Currently, the users cannot access their internal desktop computer from the Internet by using RD Gateway on Gateway1. On the internal network, a user named User1 has a client computer named Computer1 that runs Windows 8. You enable Remote Desktop on Computer1. You need to ensure that User1 can access Computer1 from the Internet by using a Remote Desktop connection. What should you configure?

- A. The Windows Firewall with Advanced Security settings on Gateway1
- B. The Windows Firewall with Advanced Security settings on Computer1
- C. The Remote Desktop connection authorization policies (RD CAPs) on Gateway1
- D. The Remote Desktop resource authorization policies (RD RAPs) on Gateway1

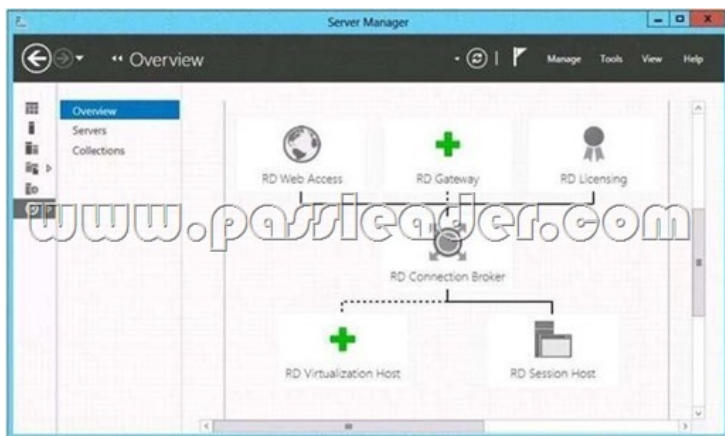
Answer: D **QUESTION 2** Your network contains an Active Directory domain named contoso.com. The domain contains servers that run Windows Server 2012. You plan to deploy a Remote Desktop Virtualization Host (RD Virtualization Host) that will contain five virtual desktops. The requirement of each virtual desktop is shown in the following table.

Virtual desktop name	Requirement
VD1	Must support creating snapshots of virtual disks.
VD2	Must support dynamically expanding virtual disks.
VD3	Must support differencing virtual hard disks.
VD4	Must support adding or removing storage when the virtual machine runs.
VD5	Must support at least three virtual disk controllers on each virtual machine.

You need to identify which virtual desktop or virtual desktops require a virtual SCSI controller. Which virtual desktop or desktops should you identify? (Each correct answer presents part of the solution. Choose all that apply.)
A. VD1
B. VD2
C. VD3
D. VD4
E. VD5
Answer: AD **QUESTION 3** Your network contains an Active Directory domain named contoso.com. The domain has Remote Desktop Services (RDS) deployed. The domain contains six servers. The servers are configured as shown in the following table.

Server
Server1
Server2
Server3
Server4
Server5
Server6

You plan to configure Server6 as an additional RD Connection Broker in the RDS deployment. You need to identify which servers require the SQL Server Native Client installed. Which servers should you identify? (Each correct answer presents part of the solution. Choose all that apply.)
A. Server1
B. Server2
C. Server3
D. Server4
E. Server5
F. Server6
Answer: CF **QUESTION 4** You have a server named Server1.



You need to ensure that you can publish RemoteApp programs. What should you do? A. Create a Remote Desktop connection authorization policy (RD CAP). B. Install the Remote Desktop Gateway role service. C. Create a collection. D. Install the Remote Desktop Virtualization Host role service. Answer: C

QUESTION 5 Your network contains an Active Directory domain named contoso.com. The domain has Remote Desktop Services (RDS) deployed. The domain contains two servers named Server1 and Server2 that have the Remote Desktop Web Access role service installed. The RD Web Access sites are accessible by using the URL <https://rdp.contoso.com/rdweb>. You connect to <https://rdp.contoso.com/rdweb> and you receive the error message shown in the exhibit. (Click the Exhibit button.)



You need to prevent the error message from appearing when users connect to the RD Web Access sites. You obtain a server certificate for rdp.contoso.com from a trusted certification authority (CA). What should you do next? More than one answer choice may achieve the goal. Select the BEST answer. A. On Server1 and Server2, open the Certificates console and import the server certificate to the Trusted Publishers store. B. On Server1 and Server2, open the Certificates console and import the server certificate to the Remote Desktop certificate store. C. From Server Manager, open the properties of the RDS deployment and select the server certificate. D. On Server1 and Server2, open Internet Information Services (IIS) Manager and modify the bindings of the Default Web Site. Answer: C



<http://www.passleader.com/70-982.html>] QUESTION 6 You manage a pooled virtual desktop collection named Collection1. Collection1 is configured to use user profile disks. You need to ensure that when users log off of their virtual desktop, the contents of the Downloads, Music, and Pictures folders are deleted. The contents of the other profile folders must be retained. What should you do? A. From a Group Policy object (GPO), modify the Folder Redirection settings. B. From the properties of each user account, modify the Remote Desktop Service Profile settings. C. From Server Manager, modify the properties of Collection1. D. From the properties of each user account, modify the Sessions settings. Answer: C

QUESTION 7 You have a server named Server1 that

runs Windows Server 2012. Server1 has the Remote Desktop Virtualization Host role service installed. You plan to create two virtual desktop collections named Collection1 and Collection2. Each collection will support a separate group of users. The requirements of each collection are shown in the following table.

Collection	Requirement
Collection1	<ul style="list-style-type: none"> • Updates must be applied automatically. • Data must NOT persist between sessions. • The template virtual machine image must be the same for all users. • New virtual desktops must be created automatically when the users connect.
Collection2	<ul style="list-style-type: none"> • Updates must be applied manually. • All virtual desktops must be created manually. • User data and applications must persist between sessions. • Users must be able to install applications on their virtual desktop.

You need to identify the required configuration for each collection. What should you identify? To answer, select the appropriate Collection type and Management type for each collection in the dialog box in the answer area.

Collection name	Collection type
Collection1	<input type="text" value="Pooled (Personal)"/>
Collection2	<input type="text" value="Pooled (Personal)"/>

Answer:

Collection name	Collection type	Management type
Collection1	<input type="text" value="Pooled (Personal)"/>	<input type="text" value="Managed (Unmanaged)"/>
Collection2	<input type="text" value="Pooled (Personal)"/>	<input type="text" value="Managed (Unmanaged)"/>

QUESTION 8 Your network contains an Active Directory domain named contoso.com. The domain contains five servers. The servers are configured as shown in the following table.

Server name	Configuration
Server1	Microsoft System Center 2012 Service Manager
Server2	Microsoft System Center 2012 Virtual Machine Manager (VMM) Administration Console
Server3	Microsoft System Center 2012 Virtual Machine Manager (VMM) management server
Server4	Library server
Server5	Hyper-V host

You plan to deploy the Virtual Machine Servicing Tool (VMST) 3.0. You need to identify on which server VMST 3.0 must be installed. Which server should you identify? A. Server1 B. Server2 C. Server3 D. Server4 E. Server5 Answer: B

QUESTION 9 You have a corporate image of Windows 8 named Imagel.wim. You deploy Image1 from a bootable USB flash drive to a client computer named Computer1. You add several applications to Image1 and configure the applications. You need to capture the modified image to the bootable USB flash drive as Image2. The solution must meet the following requirements: - The amount of disk space required for storage must be minimized. - The settings of Image1 must be retained. You start the client computer from

a Windows Pre-installation Environment (Windows PE) deployment image. What should you do next? (Each correct answer presents a complete solution. Choose all that apply.)

A. Run the imagex.exe command and specify the /capture parameter.

B. Run the imagex.exe command and specify the /append parameter.

C. Run the dism.exe command and specify the /capture-image parameter.

D. Run the dism.exe command and specify the /append-image parameter.

E. Run the diskpart attach command.

F. Run the diskpart select command.

Answer: CF

QUESTION 10 Your network contains an Active Directory domain named contoso.com. You have a custom image of Windows 8 that contains a Windows Store application named Appl. You need to remove Appl completely from the image. You must achieve the goal by using the minimum amount of administrative effort. What should you do?

A. Run the dism.exe command and specify the /image parameter and the /Remove-Package parameter.

B. Run the dism.exe command and specify the /image parameter and the /Remove-ProvisionedAppxPackage parameter.

C. Run the imagex.exe command and specify the /mountw parameter and the /delete parameter.

D. Run the imagex.exe command and specify the /mountw parameter and the /cleanup parameter.

Answer: B

Thank You for Trying Our Product, PassLeader Certification Exam Features:

- ? More than 99,900 Satisfied Customers Worldwide.
- ? Average 99.9% Success Rate.
- ? Free Update to match latest and real exam scenarios.
- ? Instant Download Access! No Setup required.
- ? Questions & Answers are downloadable in PDF format and VCE test engine format.
- ? Multi-Platform capabilities - Windows, Laptop, Mac, Android, iPhone, iPod, iPad.
- ? 100% Guaranteed Success or 100% Money Back Guarantee.
- ? Fast, helpful support 24x7.

Reliable Free PassLeader Premium Microsoft 70-982 PDF Brain Dumps and Study Guides <http://www.passleader.com/70-982.html>]