

## (New Updated) In Stock Microsoft 70-341 Exam Dumps Ensure 100 Percent Exam Pass (1-15)

P.s.: These 70-341 Exam Questions Were Updated After 2014/11/1 With The Change Of New Microsoft Exam. 100 Percent Vaild And 100 Percent Pass Ensure. Visit Our PassLeader Website And Get All Valid Exam Questions With PDF And VCE. 100 Percent Guaranteed Pass or 100 Percent Money Back Guarantee! Vendor: Microsoft Exam Code: 70-341 Exam Name: Microsoft Core Solutions of Microsoft Exchange Server 2013

**Compare And Choose The Best PassLeader 70-341 Brain Dumps**

		
<b>Banned By Microsoft</b>	<b>199 Q&amp;As</b>	<b>50 Q&amp;As</b>
<b>Not Available</b>	<b>Price: \$99.99</b>	<b>Price: \$124.99</b>
	<small>Coupon Code -- CELEB</small>	

**QUESTION 1** You have an Exchange Server 2013 organization. You create two distribution groups named Group1 and Group2. Group1 and Group2 each contain several hundred users. Group1 contains a user named User1. You need to configure moderation for Group2. The solution must meet the following requirements: - Email sent from the members of Group1 must NOT be moderated unless the sender is User1. - All other email must be moderated by a user named Admin1. Which two actions should you perform? (Each correct answer presents part of the solution. Choose two.)

A. Create a transport rule that has the conditions of the sender is User1 and the recipient is Group2. Configure the transport rule to have an action of Forward the message for approval to Admin1.

B. Create a transport rule that has the conditions of the sender is User1 and the recipient is Group2. Configure the transport rule to have an action of Forward the message for approval to Admin1.

C. Create a transport rule that has a condition of the recipient is Group2. Configure the transport rule to have an action of Forward the message for approval to Admin1.

D. Run Set-DistributionGroup Group2 - ModeratedBy Admin1 - BypassModerationFromSendersOrMembers Group1 - ModerationEnabled \$true.

**Answer: BC**

**QUESTION 2** You have an Exchange Server 2013 organization that contains one server named ex1.contoso.com. The server has the Mailbox server role and the Client Access server role installed. You plan to configure users to work from home and to access their email by using the Outlook Anywhere feature. Upon testing the planned configuration, you discover that the users can connect and synchronize email from home, but they cannot execute the following tasks: - Set automatic replies for Out of Office. - Download changes to the offline address book. - View availability data when scheduling meetings with coworkers. The users can execute these tasks when they work from the office. You need to ensure that the users can execute the tasks when they work from home. Which two actions should you perform? (Each correct answer presents part of the solution. Choose two.)

A. Install a new certificate on ex1.contoso.com

B. Modify the EWS virtual directory.

C. Create a new Autodiscover virtual directory.

D. Renew the certificate on ex1.contoso.com.

E. Modify the OAB virtual directory.

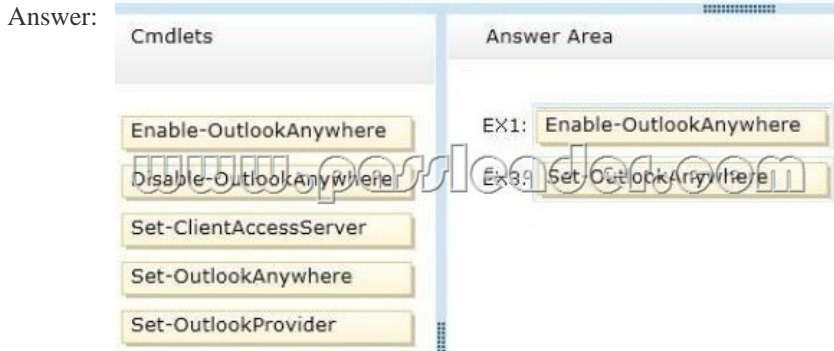
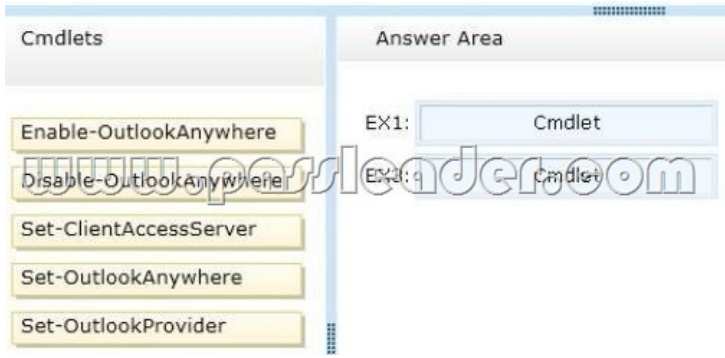
**Answer: BE**

**QUESTION 3** Drag and Drop

**Question** Your network contains an Active Directory forest. The forest contains a single domain named fabrikam.com. You have an Exchange Server organization that contains four servers. The servers are configured as shown in the following table.

Server name	
EX1	Client Access, Mailbox, Hub Transport
EX2	Mailbox
EX3	Client Access
EX4	Mailbox

You plan to enable Outlook Anywhere for all users. You plan to configure the users to connect to the name oa.fabrikam.com. The IP address of oa.fabrikam.com points to EX3. You need to ensure that users on EX2 and EX4 can access their mailbox by using Outlook Anywhere, Which command should you run on EX1 and EX3? (To answer, drag the appropriate cmdlets to the correct servers. Each cmdlet may be used once, more than once, or not at all. You may need to drag the split bar between panes or scroll to view content.)



QUESTION 4 You have an Exchange Server 2013 organization named adatum.com. The organization contains two servers named EX1 and EX2 that are configured as shown in the table.

Server name	Role
EX1	Mailbox, Client Access
EX2	Mailbox, Client Access

Both servers are members of a database availability group (DAG). EX1 has the active copy of a database named Database1. Several users who have mailboxes in Database1 discover that all of their outbound email messages remain in their Drafts folder when they use Outlook Web App. You need to ensure that the email messages are delivered. What should you do?

- A. On EX2, retry the message queues. B. On EX1, start the Microsoft Exchange Mailbox Transport Submission service. C. On EX2, start the Microsoft Exchange Mailbox Transport Submission service. D. On EX1, retry the message queues. Answer: B

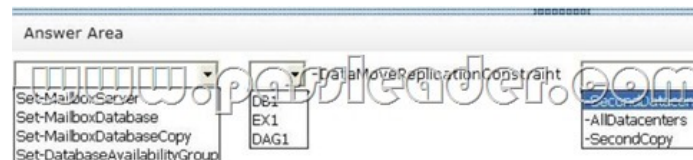
QUESTION 5 Hotspot Question You have an Exchange Server 2013 organization that contains three servers. The servers are configured as shown in the following table.

Server name	Role	Active Directory site
EX1	Mailbox, Client Access	Chicago
EX2	Mailbox, Client Access	Seattle
EX3	Mailbox, Client Access	Dallas

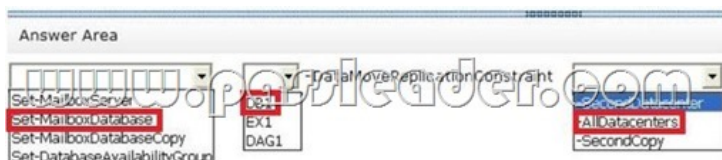
All of the servers are part of a database availability group (DAG) named DAG1. The databases are configured as shown in the following table.

Database name	Mounted on server
DB1	EX1
DB2	EX2

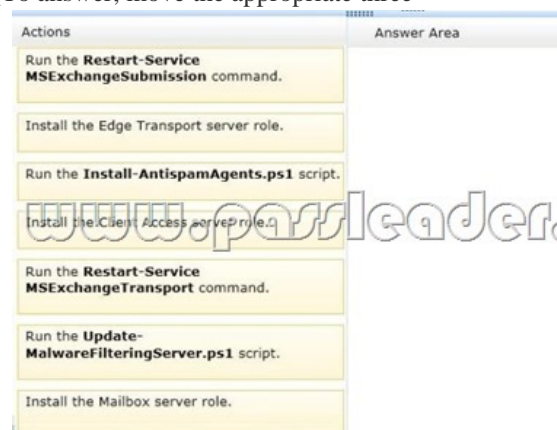
All of the databases replicate between all the members of DAG1. You plan to move all mailboxes from DB1 to DB2. You need to ensure that the passive copies of DB1 are in a healthy state before you move the mailboxes. Which command should you run? (To answer, select the appropriate options in the dialog box in the answer area.)



Answer:



QUESTION 6 Drag and Drop Question Your network contains an internal network and a perimeter network. You have an Exchange Server 2010 organization that contains an Edge Transport server named EX3. You plan to upgrade the organization to Exchange Server 2013. You plan to replace EX3 and its functionalities with a new server named EX6 that has Exchange Server 2013 installed. EX6 will be used to send all email messages to and receive all email messages from the Internet and to filter spam. You need to recommend which steps are required to install EX6. EX6 must have the least number of Exchange Server roles installed. Which three actions should you recommend performing on EX6 in sequence? (To answer, move the appropriate three actions from the list of actions to the answer area and arrange them in the correct order.)



Answer:



Case Study 1: Contoso Ltd (QUESTION 7 ~ QUESTION 14) Overview: General Overview: Contoso, Ltd., is a scientific research and supply company that has offices along the east coast of North America. The company recently completed an upgrade to Exchange Server 2013. Physical Locations: The company has three sales offices and a research office. The sales offices are located in Atlanta, New York, and Montreal. The research office is located in Miami. Existing Environment: Active Directory Environment: The network contains one Active Directory forest named contoso.com. The Miami office has its own domain named research.contoso.com. Each office is configured as an Active Directory site. Each site contains two domain controllers that run Windows Server 2008 R2 x64. All of the FSMO roles for contoso.com are owned by a domain controller in the New York site. All of the FSMO roles for the research.contoso.com domain are owned by a domain controller in the Miami site. One domain controller in each site is configured as a global catalog server. All of the domain controllers are configured as DNS servers. The functional level of the forest and domains is Windows Server 2008 R2. Network Infrastructure: All client computers are configured to connect to the DNS servers in their respective office only. Contoso.com has a standalone certification authority (CA) on a server that runs Windows Server 2008 R2. All offices connect to the New York office by using a high-speed WAN link. Email Infrastructure: The Exchange Server 2013 organization contains four servers in the New York office. The servers are configured as shown in the

following table.

Server name	Server role	Data availability group (DAG) name
NY-EX1	Mailbox server Client Access server	NY-DAG
NY-EX2	Mailbox server Client Access server	NY-DAG
NY-EX3	Mailbox server Client Access server	NY-DAG
NY-EX4	Mailbox server Client Access server	NY-DAG

All external access for the contoso.com organization is provided through an Internet link at the New York office. Load balancing is provided by using DNS round robin. All inbound and outbound email for the domain is routed through a mail appliance in the New York office. The Exchange Server 2013 organization contains four servers in the Atlanta office. The servers are configured as shown in the following table.

Server name	Server role	Data availability group (DAG) name
ATL-EX1	Mailbox server Client Access server	NY-DAG
ATL-EX2	Mailbox server Client Access server	NY-DAG
ATL-EX3	Mailbox server Client Access server	NY-DAG
ATL-EX4	Mailbox server Client Access server	NY-DAG

The file share witness for NY-DAG is on a file server in the Atlanta office. The Exchange Server 2013 organization contains two servers in the Montreal office and two servers in the Miami office. The servers are configured as shown the following table.

Server name
MIA-EX1
MIA-EX2
MTL-EX3
MTL-EX4

All external access to the organization of the research.contoso.com domain is provided through the Internet link at the Miami office. Load balancing is provided by using DNS round robin. All inbound and outbound email for the domain goes through an email appliance in the Miami office. All Exchange Server 2013 servers run Windows Server 2012 Standard. All users have Windows Phone devices that connect to the Exchange organization by using Exchange ActiveSync. **User Issues:** You discover the following user issues: - Some users report that, intermittently, they fail to connect to their email from their Windows Phone device. - Some users from the New York office report that some searches from Outlook Web App return incomplete results. - Some of the users in each office report that they fail to access their mailbox during the maintenance period of the Active Directory domain controllers. You verify that all of the remote users can connect to the network successfully by using a VPN connection, and can then launch Outlook successfully. **Partnerships:** Contoso recently entered into a partnership with a company named A. Datum Corporation. A. Datum has a main office and four branch offices. The main office is located in Toronto. A. Datum has a messaging infrastructure configured as shown in the following table.

Server name	Server role	Exchange Server version	Office
Server1	Mailbox server Client Access server Hub Transport server	Exchange Server 2010	Branch office
Server2	Mailbox server Client Access server Hub Transport server	Exchange Server 2010	Branch office
Server3	Mailbox server Client Access server Hub Transport server	Exchange Server 2010	Branch office
Server4	Mailbox server Client Access server Hub Transport server	Exchange Server 2010	Branch office
Server5	Mailbox server Client Access server Hub Transport server	Exchange Server 2010	Main office
Server6	Mailbox server Client Access server Hub Transport server	Exchange Server 2010	Main office

Requirements: Planned Changes: Contoso plans to deploy a hardware load balancer in the New York office. The load balancer must bridge all SSL connections to the Exchange servers. You plan to deploy two new Exchange Server 2013 servers in a virtual server environment in the Miami office. The servers will host a few mailboxes as part of an evaluation of resource utilization for virtualized Exchange servers. You also plan to deploy a high availability solution for Mailbox servers in the You plan to replace the email appliance in New York because of recent power outages. Business Requirements: Contoso identifies the following business requirements: - Minimize the hardware costs required for a load balancing solution. - Minimize the software costs required for a load balancing solution. - Minimize user interruptions if a service fails on a Mailbox server. - Minimize user interruptions if a service fails on a Client Access server. QUESTION 7 You need to identify which business requirement will be met by implementing the planned hardware load balancer. Which business requirement should you identify?

- A. Minimize the hardware costs required for a load balancing solution. B. Minimize the software costs required for a load balancing solution. C. Minimize user interruptions if a service fails on a Client Access server. D. Minimize user interruptions if a service fails on a Mailbox server. Answer: C

Compare And Choose The Best PassLeader 70-341 Brain Dumps

		
Banned By Microsoft Not Available	199 Q&As Price: \$99.99 Coupon Code -- CELEB	50 Q&As Price: \$124.99

<http://www.passleader.com/70-341.html>] QUESTION 8 You need to resolve the search issue reported by the users in the New York office. You restart the Microsoft Exchange Search service and discover that the active copy of the mailbox database has a content indexing status of Unknown. What should you do next? A. Rebuild the content index. B. Run the Update-MailboxDatabaseCopy cmdlet and specify the -manualresume parameter. C. Restart the Microsoft Exchange Mailbox Replication service. D. Run the Update-MailboxDatabaseCopy cmdlet and specify the -catalogonly parameter. Answer: A QUESTION 9 You need to ensure that all of the email messages sent from the Internet to adatum.com are routed through the contoso.com organization. What should you create in contoso.com? (Each correct answer presents part of the solution. Choose all that apply.) A. a contact object for each adatum.com recipient B. an internal relay accepted domain for adatum.com C. a Send connector that is configured to point to the contoso.com transport servers D. a Send connector that is configured to point to the adatum.com transport servers E. an authoritative accepted domain for adatum.com Answer: BD QUESTION 10 You need to prevent several users in the Miami office from establishing more than two concurrent Exchange ActiveSync connections to the Exchange Server organization. The solution must affect only the users in the Miami office. Which two actions should you perform? (Each

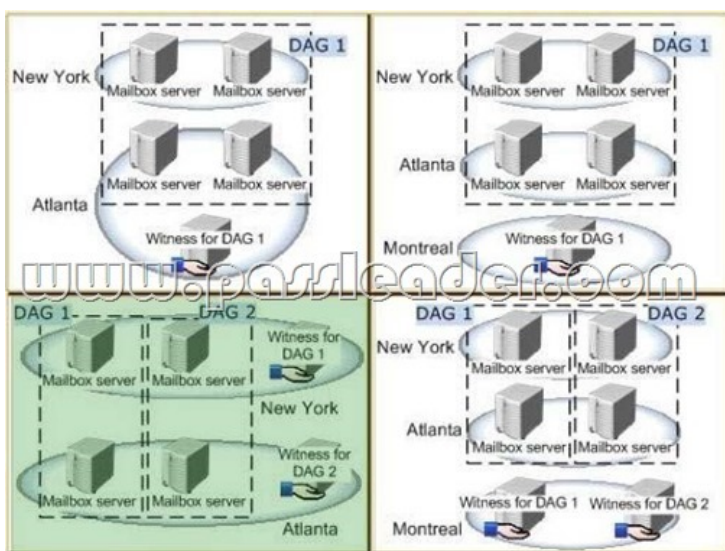
correct answer presents part of the solution. Choose two.) A. Create a new throttling policy that has the Organization scope. B. Create a new throttling policy that has the Global scope. C. Create a new throttling policy that has the Regular scope. D. Run the Set-ThrottlingPolicyAssociation cmdlet. E. Run the Set-ThrottlingPolicy cmdlet. F. Remove the default throttling policy. Answer: CD

QUESTION 11 You need to recommend a temporary solution to reroute all of the outbound email messages through the Miami mail appliance during the planned replacement of the New York mail appliance. What are three possible ways to achieve the goal? (Each correct answer presents a complete solution. Choose three.) A. Modify the value of the SmartHost of the Send connector in the New York office. B. Increase the cost of the Send connector in the Miami office. C. Increase the cost of the Send connector in the New York office. D. Decrease the cost of the Send connector in the New York office. E. Modify the value of the SmartHost of the Send connector in the Miami office. F. Disable the Send connector in the New York office. Answer: ACF

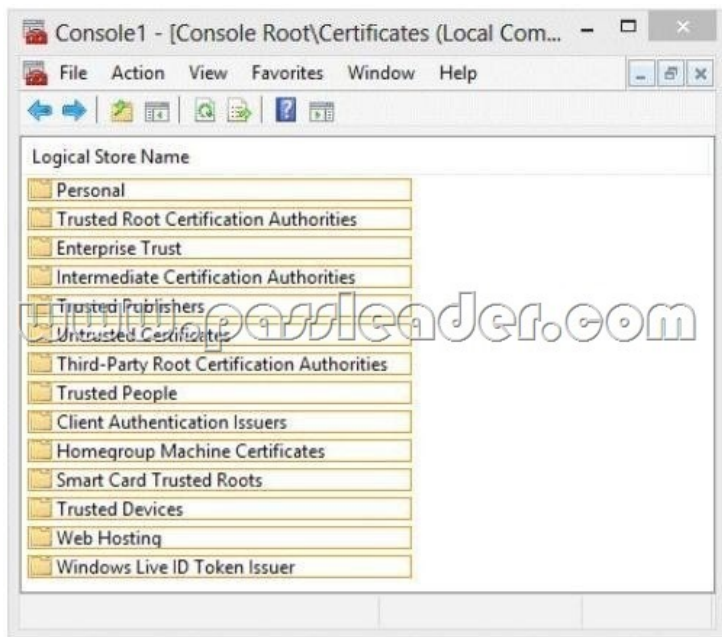
QUESTION 12 Hotspot Question You are evaluating a DAG design for the New York and Atlanta offices. You need to ensure that all of the users in the New York and Atlanta offices can access their mailbox if the WAN link fails. Which DAG design should you deploy? To answer, select the appropriate DAG design in the answer area.



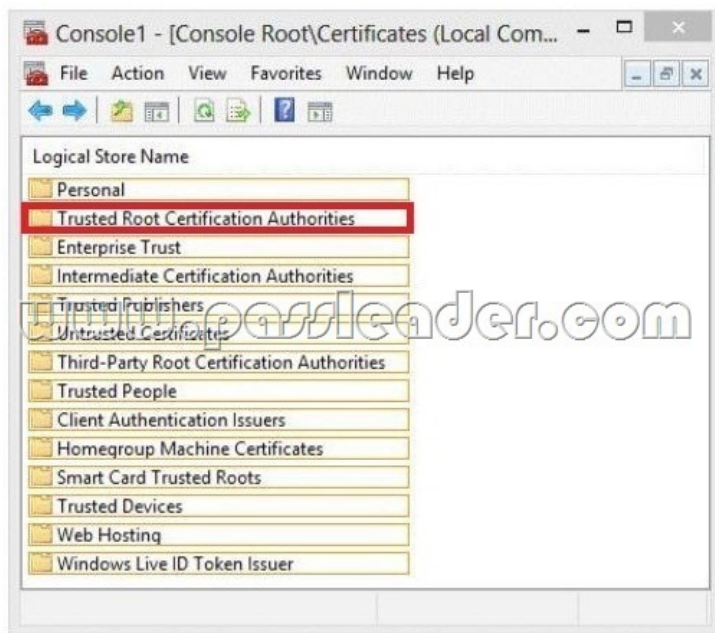
Answer:



QUESTION 13 Hotspot Question You discover that one of the Client Access servers in the New York office does not trust the standalone CA. You need to ensure that all of the users who have Windows Phone devices can connect successfully to their mailbox. In which node should you install the root CA certificate? To answer, select the appropriate node in the answer area.



Answer:



QUESTION 14 You plan to deploy an Exchange Server 2013 organization. You need to recommend a solution to ensure that a user named User1 can access email messages by using Exchange ActiveSync on an Android device. The solution must prevent all other users from using Android devices to access email by using Exchange ActiveSync. What should you recommend doing first?

A. Run the Set-CasMailbox cmdlet. B. Create a device access rule. C. Modify the Quarantine Notification settings. D. Create a mobile device mailbox policy.

Answer: B

Case Study 2: Litware, Inc (QUESTION 15 ~ QUESTION 21) Overview: Litware, Inc., is a manufacturing company located in North America. The company has a main office and two branch offices. The main office is located in Chicago. The branch offices are located in Baltimore and Los Angeles. Existing Environment: Active Directory Environment: The network contains one Active Directory forest named litwareinc.com. Each office is configured as an Active Directory site. All domain controllers in the Los Angeles office run Windows Server 2008 R2. All domain controllers in the Chicago office run Windows Server 2003 Service Pack 1 (SP1). All domain controllers in the Baltimore office run Windows Server 2012. All of the FSMO roles are located on a domain controller in the Baltimore office. All of the domain controllers are configured as global catalog servers. You have a distribution group for each department. The distribution groups contain all of the users in each respective department. Network Infrastructure: The servers in each office are configured as shown in the following table.

Office location	Server name	Server role	Exchange Server version
Los Angeles	LA-EX1	Mailbox server	Exchange Server 2010
Los Angeles	LA-EX2	Client Access server Hub Transport server	Exchange Server 2010
Baltimore	BA-EX1	Mailbox server Client Access server Hub Transport server	Exchange Server 2007

The Baltimore and Chicago offices have independent Internet connections. Internet connectivity for the Los Angeles office is provided through Chicago. Users frequently send large email messages to other users in the company. Recently, you increased the maximum message size to 50 MB. **Planned Changes:** The company plans to deploy a new Exchange Server 2013 infrastructure that will contain two Clients Access servers and two Mailbox servers in the Chicago office. The servers will be configured as shown in the following table.

Server name	Server role
CH-EX2	Mailbox server
CH-EX3	Mailbox server
CH-EX4	Client Access server
CH-EX5	Client Access server

All client connections to the Exchange Server organization will be routed through a hardware load balancer. The name client.litwareinc.com will point to the virtual IP address of the hardware load balancer. Once the transition to Exchange Server 2013 in the Chicago office is complete, all mail flow to and from the Internet will be managed centrally through that office by using a Send connector that has the following configurations: - Connector name: CH-to-Internet - Address space: \* - Source servers: CH-EX2, CH-EX3 - Cost: 10

**QUESTION 15** You need to recommend changes to the network to ensure that you can deploy the planned Exchange Server 2013 infrastructure. What should you recommend?

A. Transfer of the FSMO roles to a domain controller in the Chicago office.  
 B. Change the forest functional level.  
 C. Change the domain functional level.  
 D. Change the operating system on one of the domain controllers in the Chicago office

**Answer: D**

Thank You for Choosing PassLeader's Products, We PassLeader Guarantee: 1) More than 99,900 Satisfied Customers Worldwide. 2) Average 99.9% Success Rate. 3) Free Update to match latest and real exam scenarios. 4) Instant Download Access! No Setup required. 5) Questions & Answers are downloadable in PDF format and VCE test engine format. 6) Multi-Platform capabilities - Windows, Laptop, Mac, Android, iPhone, iPod, iPad. 7) 100% Guaranteed Success or 100% Money Back Guarantee. 8) Fast, helpful support 24x7.

Compare And Choose The Best **PassLeader 70-341 B**

 ↓ Banned By Microsoft Not Available	 Leader of IT Certifications ↓ 199 Q&As Price: \$99.99 Coupon Code -- CELEB
--	---

<http://www.passleader.com/70-341.html>