

(New Version) Free Download More Than 98 Percent Real Microsoft 70-417 Exam Questions (31-40)

Attention: These 70-417 Exam Questions Were Updated After 2014/7/1 With The Change Of New Microsoft Exam. 100 Percent Valid And 100 Percent Pass Ensure. Visit Our PassLeader Website And Get All Valid Exam Questions With PDF And VCE.



QUESTION 31 Your network contains an Active Directory domain named contoso.com. The domain contains a domain controller named DCS. DC5 has a Server Core Installation of Windows Server 2012 R2. You need to uninstall Active Directory from DC5 manually. Which tool should you use? A. The ntdsutil.exe command B. The dcpromo.exe command C. The Remove-WindowsFeaturecmdlet D. The Remove-ADComputercmdlet Answer: B

QUESTION 32 Your network contains an Active Directory domain named adatum.com. The domain contains several thousand member servers that run Windows Server 2012 R2. All of the computer accounts for the member servers are in an organizational unit (OU) named ServersAccounts. Servers are restarted only occasionally. You need to identify which servers were restarted during the last two days. What should you do? A. Run dsquery computer and specify the -sra /epwc parameter. B. Run Get-ADComputer and specify the SearchScope parameter. C. Run dsquery server and specify the -o parameter. D. Run Get-ADComputer and specify the lastLogon property Answer: D

QUESTION 33 Your network contains an Active Directory domain named adatum.com. The domain contains three domain controllers. The domain controllers are configured as shown in the following table.

Name	Operating system	Additional server roles
DC1	Windows Server 2008 R2	DNS Server
DC2	Windows Server 2012 R2	DNS Server
DC3	Windows Server 2012 R2	None

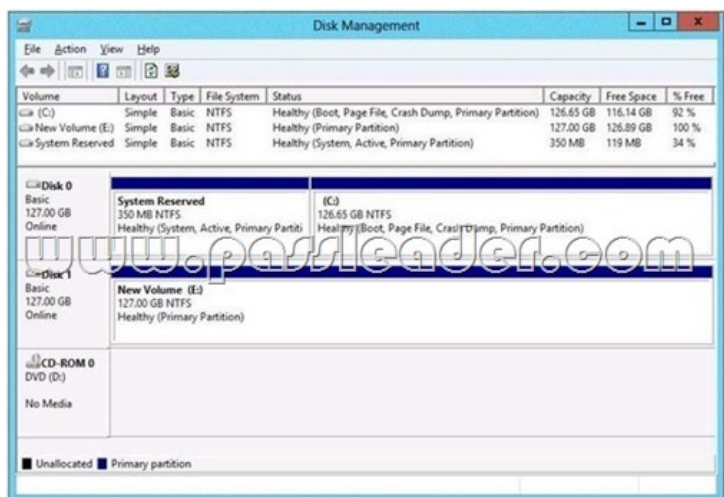
DC3 loses network connectivity due to a hardware failure. You plan to remove DC3 from the domain. You log on to DC3. You need to identify which service location (SRV) records are registered by DC3. What should you do? A. Open the %windir%\system32\dnsbackup\adatum.com.dns file. B. Run ipconfig /displaydn*. C. Run dcdiag /test:dns, D. Open the %windir%\system32\config\netlogon.dns file.

Answer: D

QUESTION 34 You have a server named Server1 that runs Windows Server 2012 R2. Server1 has the HyperV server role installed. On Server1, you create a virtual machine named VM1. VM1 has a legacy network adapter. You need to assign a specific amount of available network bandwidth to VM1. What should you do first? A. Add a second legacy network adapter, and then configure network adapter teaming. B. Remove the legacy network adapter, and then run the Set-VMNetworkAdaptercmdlet. C. Remove the legacy network adapter, and then add a network adapter. D. Add a second legacy network adapter, and then run the Set-VMNetworkAdaptercmdlet.

Answer: C

QUESTION 35 You have a server named Server1 that runs Windows Server 2012 R2. Server1 has the HyperV server role installed. The disks on Server1 are configured as shown in the exhibit. (Click the Exhibit button.)



You create a virtual machine on Server1. You need to ensure that you can configure a pass-through disk for the virtual machine. What should you do? A. Convert Disk 1 to a dynamic disk. B. Delete partition E. C. Convert Disk 1 to a GPT disk. D. Take Disk 1 offline. Answer: D

Compare And Choose
Pass4sure
 Banned By Microsoft
 Not Available

<http://www.passleader.com/70-417.html>] QUESTION 36 Your company's security policy states that all of the servers deployed to a branch office must not have the graphical user interface (GUI) installed. In a branch office, a support technician installs a server with a GUI installation of Windows Server 2012 R2 on a new server, and then configures the server as a DHCP server. You need to ensure that the new server meets the security policy. You want to achieve this goal by using the minimum amount of administrative effort. What should you do? A. From Server Manager, uninstall the User Interfaces and Infrastructure feature. B. Reinstall Windows Server 2012 R2 on the server. C. From Windows PowerShell, run Uninstall-WindowsFeature Desktop-Experience. D. From Windows PowerShell, run Uninstall-WindowsFeature PowerShell-ISE. Answer: A QUESTION 37 You have 3 server that runs Windows Server 2012 R2. The server contains the disks configured as shown in the following table.

Disk name	Partition table type	Disk storage type	Unallocated disk space
Disk 0	GPT	Dynamic	2 TB
Disk 1	MBR	Basic	4 TB
Disk 2	GPT	Dynamic	4 TB
Disk 3	GPT	Dynamic	4 TB
Disk 4	MBR	Basic	2 TB

You need to create a volume that can store up to 3 TB of user files. The solution must ensure that the user files are available if one of the disks in the volume fails. What should you create? A. A storage pool on Disk 2 and Disk 3 B. A mirrored volume on Disk 2 and Disk 3 C. A storage pool on Disk 1 and Disk 3 D. A mirrored volume on Disk 1 and Disk 4 E. Raid 5 Volume out of Disks 1, 2 and 3 Answer: B QUESTION 38 You have a server named Corel that has a Server Core Installation of Windows Server 2012 R2. Corel has the Hyper-V server role installed. Corel has two network adapters from different third-party hardware vendors. You need to configure network traffic failover to prevent connectivity loss if a network adapter fails. What should you use? A. netsh.exe B. Install-Feature C. New-NetSwitchTeam D. Add -Nets witchTeamMember Answer: C QUESTION 39 You have a server named Server1 that runs Windows Server 2012 R2. Server1 has five network adapters. Three of the network adapters are connected to a network named

LAN1. The two other network adapters are connected to a network named LAN2. You need to create a network adapter team from the three network adapters connected to LAN1. Which tool should you use? A. Routing and Remote Access B. Network Load Balancing Manager C. Network and Sharing Center D. Server Manager Answer: D QUESTION 40 Your network contains a server named Server1 that runs Windows Server 2012 R2. Server1 has the Hyper-V server role installed. Server1 hosts four virtual machines named VM1, VM2, VM3, and VM4. Server1 is configured as shown in the following table.

Hardware component	Configuration
Processor	Eight quad-core CPUs that have non-uniform memory access (NUMA)
Memory	32 GB of RAM
Disk	Two local 4-TB disks
Network	Eight network adapters VMQ-supported PCI-SIG-supported

You need to ensure that VM1 can use more CPU time than the other virtual machines when the CPUs on Server1 are under a heavy load. What should you configure? A. NUMA topology B. Resource control C. Resource metering D. Virtual Machine Chimney E. The VLAN ID F. Processor Compatibility G. The startup order H. Automatic Start Action I. Integration Services J. Port mirroring K. Single-root I/O visualization Answer: B

Compare And Choose The Best **PassLeader 70-417 Brain**

		
↓	↓	
Banned By Microsoft Not Available	273 Q&As Price: \$99.99 Coupon Code -- CELEB	100 Price:

Click Here To Get The New Update And 100 Percent Valid & Pass 70-417 Exam Questions --
<http://www.passleader.com/70-417.html>]