

[Pass Ensure VCE Dumps All Vaild 70-687 290q Braindump Offered By PassLeader For Free Download (16-30)

Pass 70-687 exam easily by learning PassLeader 70-687 exam dumps! PassLeader just updated the 290q 70-687 exam questions, the new 70-687 vce or pdf practice tests cover all the real questions, which will help you passing exam easily. What's more, PassLeader's new 70-687 vce dumps and pdf dumps have corrected many wrong answers, which is not available in other 70-687 vce files, it will ensure you 100 percent passing exam! keywords: 70-687 exam,290q 70-687 exam dumps,290q 70-687 exam questions,70-687 pdf dumps,70-687 vce dumps,70-687 practice test,70-687 study guide,Configuring Windows 8.1



QUESTION 16A company has client computers that run Windows 8.1. Each computer has two hard drives. You need to create a dynamic volume on each computer to support the following features:- Fault tolerance- Fast write performanceWhat kind of dynamic volume should you create? A. Striped volumeB. Spanned volumeC. RAID 5 volumeD. Mirrored volume Answer: D
Explanation: <http://technet.microsoft.com/en-us/library/cc737048%28v=ws.10%29.aspx> What Are Dynamic Disks and Volumes? Types of Dynamic Volumes.A dynamic volume is a volume that is created on a dynamic disk. Dynamic volume types include simple, spanned, and striped volumes.Mirrored Volumes.A mirrored volume is a fault-tolerant volume that provides a copy of a volume on another disk. Mirrored volumes provide data redundancy by duplicating the information contained on the volume. The two disks that make up a mirrored volume are known as mirrors. Each mirror is always located on a different disk. If one of the disks fails, the data on the failed disk becomes unavailable, but the system continues to operate by using the unaffected disk. Mirrored volumes are typically created by the user who requires fault-tolerance and who has two disks in their computer. If one disk fails, the user always has a copy of their data on the second disk. Mirrored volumes provide better write performance than RAID-5 volumes. QUESTION 17You administer Windows 8.1 Enterprise computers in your company's Active Directory Domain Services (AD DS) domain. Your company uses several peripheral devices. The drivers for these devices are not available on Windows Update. You need to ensure that the drivers install when users connect these devices to their computers. What should you do? A. For the Group Policy setting Prioritize all digitally signed drivers equally during the driver ranking and selection process, select Disabled.B. From Device Manager, find the detected scanner device and select Update Driver.C. Add the following registry key to the computers: HKEY_LOCAL_MACHINE/Software/Microsoft/Windows/Current Version/DevicePath. Add %systemroot%\inf and the UNC path to the drivers share.D. For the Group Policy setting Configure driver search locations, select Enabled. Make the drivers available on the UNC path to the driver's share. Answer: CExplanation: <http://technet.microsoft.com/en-us/library/cc753716.aspx> Configure Windows to Search Additional Folders for Device Drivers.To configure Windows to Search Additional Folders for Device Drivers Start Registry Editor. Click Start, and in the Start Search box type regedit. If the User Account Control dialog box appears, confirm that the action it displays is what you want, and then click Yes.Navigate to the following registry key:HKEY_LOCAL_MACHINE/Software/Microsoft/Windows/Current Version In the details pane, double-click DevicePath.Add additional folder paths to the setting, separating each folder path with a semi- colon. Ensure that %systemroot%\inf is one of the folders included in the value.Caution:Do not remove %systemroot%\inf from the DevicePath registry entry. Removal of that folder can break device driver installation. QUESTION 18A company has client computers that run Windows 8.1. Each computer has two hard drives. You need to create a dynamic volume on each computer that maximizes write performance with data fault tolerance. Which kind of dynamic volume should you create? A. Striped VolumeB. RAID 5 VolumeC. Spanned VolumeD. Mirrored Volume Answer: DExplanation: <http://technet.microsoft.com/en-us/library/cc737048%28v=ws.10%29.aspx> Types of Dynamic Volumes.A dynamic volume is a volume that is created on a dynamic disk. Dynamic volume types include simple, spanned, and striped volumes.Mirrored Volumes.A mirrored volume is a fault-tolerant volume that provides a copy of a volume on another disk. Mirrored volumes provide data redundancy by duplicating the information contained on the volume. The two disks that make up a mirrored volume are known as mirrors. Each mirror is always located on a different disk. If one of the disks fails, the data on the failed disk becomes unavailable, but the system continues to operate by using the unaffected disk. Mirrored volumes are typically created by the user who requires

fault-tolerance and who has two disks in their computer. If one disk fails, the user always has a copy of their data on the second disk. Mirrored volumes provide better write performance than RAID-5 volumes. QUESTION 19A company network contains two workgroups named Workgroup1 and Workgroup2. Workgroup1 contains computers that run Windows 7. Workgroup2 contains computers that run Windows 8.1. You run the Enable-PSRemoting Windows PowerShell cmdlet on the Workgroup2 computers. You need to ensure that administrators can manage the Workgroup1 computers from the Workgroup2 computers by using Windows PowerShell Remoting. Which two actions should you perform? (Each correct answer presents part of the complete solution. Choose two.) A. Install Windows PowerShell 2.0 on the Workgroup1 computers.B. Run the winrm quickconfig command on the Workgroup2 computers.C. On the Workgroup1 computers, add the Workgroup2 computers to the trusted hosts in Windows Remote Management (WinRM).D. Run the winrm quickconfig command on the Workgroup1 computers.E. On the Workgroup2 computers, add the Workgroup1 computers to the trusted hosts in Windows Remote Management (WinRM). Answer: CD

QUESTION 20A computer that runs Windows 8.1 has two hard disk drives. The user stores data files in specific storage locations outside of the standard libraries on both drives. File search results are delayed. You need to return relevant search results more quickly. What should you do? A. Remove all directories from indexed locations.B. Add the specific storage locations to indexed locations.C. Allow indexing of file contents in non-indexed locations.D. Add encrypted files to the index. Answer: B

QUESTION 21You administer Windows 8.1 Enterprise client computers in your company network. You change settings on a reference computer by using the Windows Firewall with Advanced Security tool. You want to apply the same settings to other computers. You need to save the Windows Firewall with Advanced Security configuration settings from the reference computer. You also need to be able to import the configuration settings into a Group Policy object later. What should you do? A. Run the netsh advfirewall export c:\settings.xml command.B. Run the netsh advfirewall export c:\settings.txt command.C. Run the netsh advfirewall export c:\settings.wfw command.D. Run the netsh firewall export c:\settings.xml command. Answer: C

QUESTION 22 You administer Windows 8.1 Pro computers in your company network. A server named Server1 runs Windows Server 2012. Server1 allows incoming VPN and Remote Desktop connections. A remote user requires access to files on Server1. You need to prevent the user from downloading any files from Server1 to his local computer. Your solution must ensure that the user can read the files on Server1. What should you do? A. Create a new VPN connection. Disable local drive mappings.B. Create a new Remote Desktop connection.C. Set the Local Computer policy to Disable drives redirection for Remote Desktop Services.D. Create a new Remote Desktop connection. Set the Local Computer policy to Disable clipboard redirection for Remote Desktop Services. Answer: C

Explanation: <http://technet.microsoft.com/en-us/library/cc725887%28v=ws.10%29.aspx> Device and Resource Redirection.Policy settings in this node control access to devices and resources on a client computer in Terminal Services sessions. Do not allow drive redirection.This policy setting allows you to specify whether to prevent the mapping of client drives in a Terminal Services session (drive redirection). By default, Terminal Services maps client drives automatically upon connection. Mapped drives appear in the session folder tree in Windows Explorer or My Computer in the format <driveletter> on <computername>. You can use this policy setting to override this behavior. If you enable this policy setting, client drive redirection is not allowed in Terminal Services sessions. If you disable this policy setting, client drive redirection is always allowed. If you do not configure this policy setting, client drive redirection is not specified at the Group Policy level. However, an administrator can still disable client drive redirection by using the Terminal Services Configuration tool.

Why Not Try PassLeader New Premium 70-687

Pass4sure
Banned By Microsoft
Not Available

PL PassLeader
Leader of IT Certifications
290 Q&As
Price: \$99.99
Coupon Code -- CELEB

BONUS !!!
Free VCE Player

70-687 exam dumps, 70-687 exam questions, 70-687 vce dumps, 70-687 pdf dumps, 70-687 practice test, 70-687 study guide: <http://www.passleader.com/70-687.html>

QUESTION 23A company has 10 client computers that run Windows 8.1. An employee updates a device driver on her computer and then restarts the computer. Windows does not start successfully. You start the computer in Safe Mode. You need to identify the most recently installed driver and gather the maximum amount of information about the driver installation. What should you do? A. In Device Manager, run a scan for hardware changes.B. In the Event Viewer console, display the Hardware Events log.C. In the Programs and Features Control Panel item, display the installed updates.D. Display the contents of the Windowsinfsetupapi.dev.log file. Answer: D

Explanation: <http://support.microsoft.com/kb/927521> Windows 7, Windows Server 2008 R2, and Windows Vista setup log file locationsC:WINDOWSINFsetupapi.dev.logContains information about

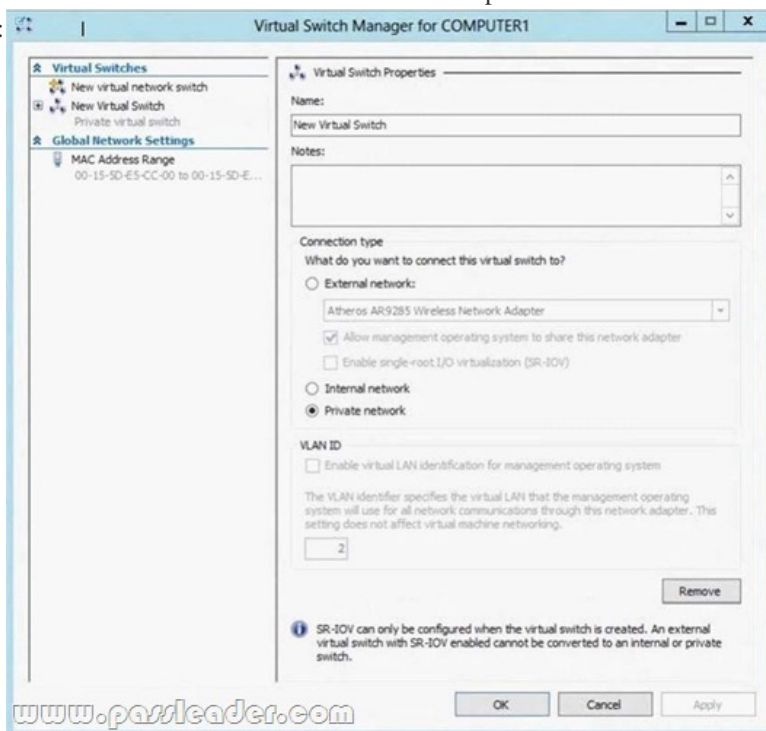
Plug and Play devices and driver installation. QUESTION 24 Employees are permitted to bring personally owned portable computers that run Windows 8.1 to the office. They are permitted to install corporate applications by using the management infrastructure agent and access corporate email by using Windows Mail. An employee's personally owned portable computer is stolen. You need to protect the corporate applications and email messages on the computer. Which two actions should you perform? (Each correct answer presents part of the solution. Choose two.) A. Prevent the computer from connecting to the corporate wireless network. B. Disconnect the computer from the management infrastructure. C. Change the user's password. D. Initiate a remote wipe. Answer: CD

Explanation: D: A Remote Wipe is the process where a device is selected from a central Microsoft Exchange or management console and chosen to be wiped, for example if the device has been lost by the owner. The Remote Wipe command is then sent to the device via ActiveSync. For a device such as a Windows Phone, all data is deleted, including email, contacts, calendar for all accounts and other data on the device such as documents and picture. However, when ActiveSync Remote Wipe is performed against a Windows 8 or Windows RT device, the scope of the wipe is more limited. Only the email, contacts, and calendar for information stored in the built-in Mail application are deleted. Other data on the system is not deleted, including information from the Microsoft Office Outlook client.

QUESTION 25 A company has an Active Directory Domain Services (AD DS) domain. All client computers run Windows 8.1. Portable client computers connect to the corporate wireless network. You have the following requirements: - Prevent users from configuring a wireless network by using settings from a USB flash drive. - Do not affect the use of other USB devices. You need to create a Group Policy object (GPO) to meet the requirements. Which GPO should you create? A. A GPO that disables the Allow only USB root hub connected Enhanced Storage Features policy setting. B. A GPO that enables wireless policy processing. C. A GPO that prohibits connections to mobile broadband networks when roaming. D. A GPO that configures Windows Connect Now settings. Answer: D

Explanation: Computer Configuration Policies Administrative Templates Network Windows Connect Now. Turn Off Ability To Configure Using A USB Flash Drive setting: Prevents Windows from being able to store a Windows Connect Now configuration to a UFD. Because the Windows Connect Now information stored on a UFD contains information that can allow computers to access your protected wireless network, you might choose to disable this setting to improve the security of your wireless networks.

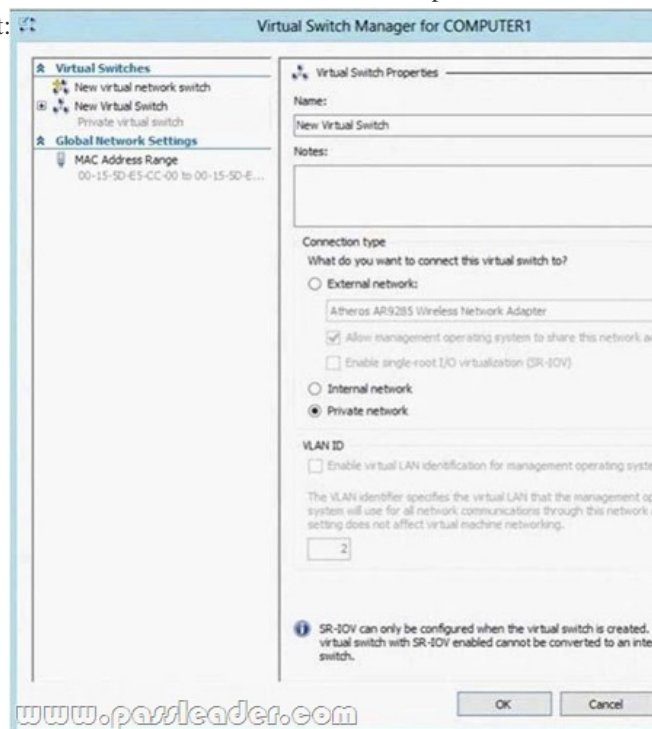
<http://sourcedaddy.com/windows-7/windows-connect-now-in-windows-7.html> QUESTION 26 A company has an Active Directory Domain Services (AD DS) domain with one physical domain controller. All client computers run Windows 8.1. A client computer hosts a Windows 8.1 virtual machine (VM) test environment. The VMs are connected to a private virtual switch that is configured as shown in the Virtual Switch Manager exhibit:



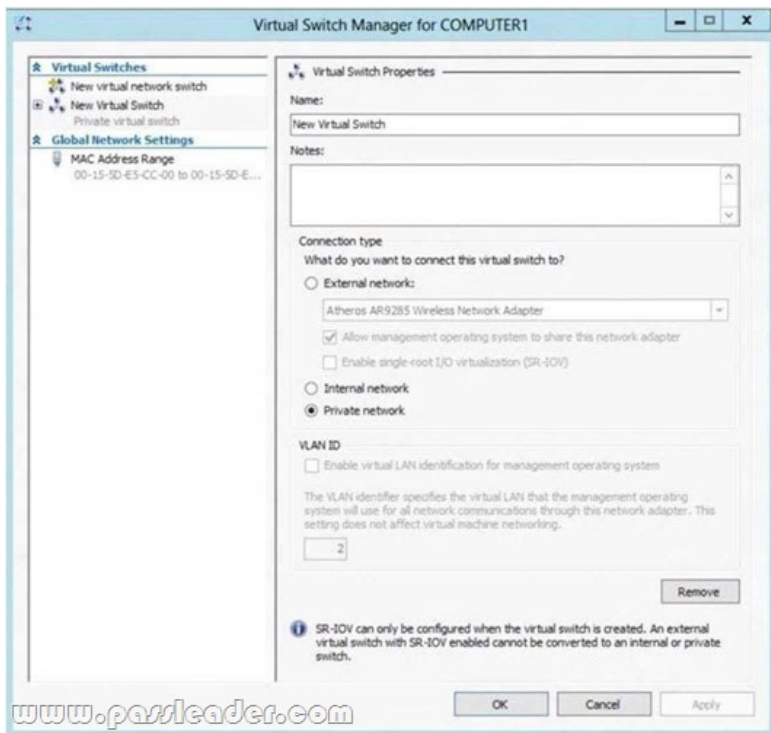
You have the following requirements: - Configure the test environment to allow VMs to communicate with the host machine. - Minimize impact on the host machine. You need to meet the requirements. What should you do? A. Create a new virtual switch with a Private Network [CP1] connection type. B. Create a new virtual switch with an ExternalNetwork connection type. C.

Change the VLAN ID of the private virtual switch to Enable Virtual LAN identification.D. Create a new virtual switch with an Internal Network connection type. Answer: D QUESTION 27A portable computer that runs Windows 8.1 uses a mobile broadband connection for the corporate wireless network. The computer also has a wired corporate network connection. The computer successfully downloads Windows updates when connected to either network. You need to ensure that the computer automatically downloads updates by using Windows Update only while connected to the wired corporate network connection. What should you do? A. Set the corporate wireless network to metered.B. Set the corporate wireless network to non-metered.C. Configure the Specify intranet Microsoft update service location local Group Policy setting.D. Configure a Windows Firewall connection security rule. Answer: A Explanation:

http://www.windowsnetworking.com/articles_tutorials/Using-Wireless-Networks-Windows-8.html You can also set particular networks as a metered connection, which will then disable Windows Update from downloading updates (except for critical security patches) and possibly disable or reduce data usage from other Microsoft and non-Microsoft applications as well. QUESTION 28A company has an Active Directory Domain Services (AD DS) domain with one physical domain controller. All client computers run Windows 8. A client computer hosts a Windows 8 virtual machine (VM) test environment. The VMs are connected to a private virtual switch that is configured as shown in the Virtual Switch Manager exhibit:



The VMS are unable to connect to the domain controller. You have the following requirements:- Configure the test environment to allow VMs to communicate with the domain controller. - Ensure that the VMs can communicate with other VMS fl the test environment when the domain controller is unavailable.You need to meet the requirements. What should you do first?



A. Create a new virtual switch with an Internal Network connection type.
B. Create a new virtual switch with a Private Network connection type.
C. Create a new virtual switch with an External Network connection type.
D. Change the connection type of the private virtual switch to Internal only.

Answer: C

QUESTION 29 A portable computer that runs Windows 8.1 uses a mobile broadband connection for the corporate wireless network. The computer also has a wired corporate network connection. The computer successfully downloads Windows updates when connected to either network. You need to ensure that the computer automatically downloads updates by using Windows Update while also connected to the wireless corporate network connection. What should you do?

A. Set the corporate wireless network to metered.
B. Set the corporate wireless network to non-metered.
C. Configure the Specify intranet Microsoft update service location local Group Policy setting.
D. Configure a Windows Firewall connection security rule.

Answer: B

Explanation: Setting a Wireless network to METERED allows only critical Windows Updates using that connection. Setting a Wireless network to NON-METERED allows all Windows Updates using that connection.

Source: <http://windows.microsoft.com/en-US/windows-8/metered-internet-connections-frequently-asked-questions>

QUESTION 30 A company has an Active Directory Domain Services domain. All client computers run Windows 8.1 and are joined to the domain. You run the ipconfig command on a client computer. The following output depicts the results.

Ethernet adapter Local Area Connection 3:

```
Connection-specific DNS Suffix. . . :  
IPv4 Address. . . . . : 192.168.1.102  
Subnet Mask . . . . . : 255.255.255.0  
Default Gateway . . . . . :  
  
Tunnel adapter isatap.{DFCE21ED-2EE5-46BA-93BE-97743DE6FC94}:  
  
Media State: . . . . . : Media disconnected  
Connection-specific DNS Suffix. . . : www.passleader.com
```

You need to ensure that you can establish a DirectAccess connection from the client computer to the network. What should you do?

A. Create a new VPN connection.
B. Remove the computer from the domain.
C. Enable IPv6 on the network adapter.
D. Configure a static IPv4 address.

Answer: C

Explanation: <http://technet.microsoft.com/en-us/library/dd637767%28v=ws.10%29.aspx>

DirectAccess Connections. DirectAccess overcomes the limitations of VPNs by automatically establishing a bi-directional connection from client computers to the corporate network. DirectAccess is built on a foundation of proven, standards-based technologies: Internet Protocol security (IPsec) and Internet Protocol version 6 (IPv6).

Further Information: <http://john.bryntze.net/jbkb-v2/certification-exam-70-687-configuring-windows-8-part-3-configure-network-connectivity-15/>

A few Windows 8 functions only work with IPv6 such as DirectAccess and HomeGroup.

Why Not Try **PassLeader New Premium 70-687 Exam Dumps?**

		
↓	Leader of IT Certifications	↓
Banned By Microsoft Not Available	290 Q&As Price: \$99.99	50 Q&As Price: \$124.99
	BONUS !!! Free VCE Ployer	
	Coupon Code -- CELEB	

<http://www.passleader.com/70-687.html>